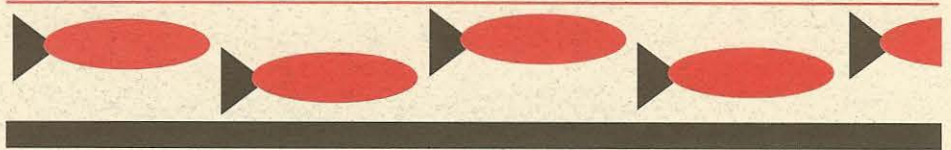


H

HARSTINE ISLANDER

HARSTINE ISLAND COMMUNITY CLUB • 1995 ANNUAL NEWSLETTER



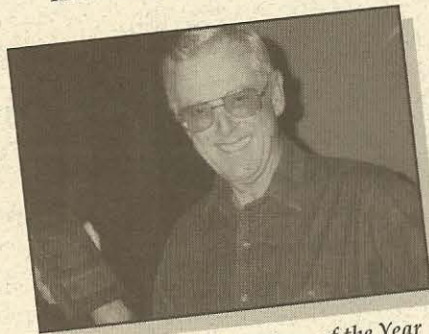
JOIN YOUR NEIGHBORS!



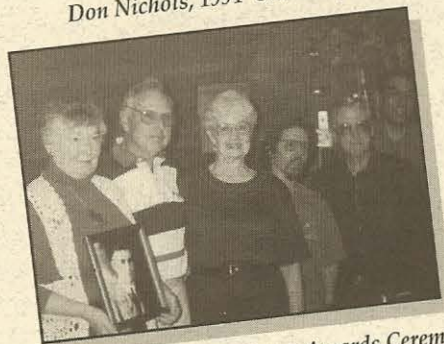
Join us at the Community Club sometime.



Hastine Apple Squeeze—always a hit!



Don Nichols, 1994 Citizen of the Year



Annual Honored Citizens Awards Ceremony - Jerri Lewis accepting for Bennett Howard (in picture); Louie & Fran Orth, honored citizens; Jim Anderson, Don Nichols, & Gary Hink, honored citizen

With a substantial increase in membership to 456 members this past year, the Community Club and its subsidiary clubs have really grown. There is a Club for most every interest and activities for all ages. Events are scheduled year-round and many serve as fundraisers for charitable causes in our community. If you are not a Community Club member yet, enclosed is an application to join the fun, future planning, and activities on your Island (even if you are not a full-time resident).

The Community Club counts on your membership fees to pay operating expenses. On page 3 you will find a balance statement for the past year so you can see how your membership fees were distributed. Luckily, there are many volunteers that contribute much of their time to these events and they are recognized annually at the Octoberfest dinner. New Club officers selected at each December meeting, include for '95: Jim Anderson, Pres., Ted Boyce, Vice Pres., Marilyn Bossart, Secretary, and Bill Plunkett, Treasurer. Board members are Sam Edgin, Nick Neuburg, and Nola Young. Maintenance chairperson is Louie Orth.

There are plans to start a "Harstine Welcome Wagon" for 1995 to welcome newcomers to the Island. You have probably noticed that Club activities and events are posted on a sign as you come over the bridge and most are included on the calendar on back page.

DO YOU LIVE ON

Hartstene or Harstine Island?

The original spelling of the name was Harstine and many Island "pioneers" as well as Community Club members and Islanders would like to see the original spelling reinstituted. A petition is being circulated on the Island to achieve this.

**Contact Sam Edgin
for more information.**

ISLAND PLANNING BOARD

The Harstine Island Planning Board was involved in many meetings and hearings on the Subarea Plan this past year with the Mason County Commissioners and interested residents. The Island Board and the Commissioners went through the Plan page by page and made additions and deletions with public input. When this was completed, Commissioner, Marv Faughender, told the Island Board that he would support an interim lot size moratorium of 1.5 acres which was smaller than the requested minimum 2.5 acre size specified in the Island Subarea Plan.

This was not satisfactory to the majority of the Island Board members in attendance so the Subarea Plan and moratorium were not adopted. The remaining Board members suggested they would meet with Robyn Tyner, Senior Planner, Mason County, and discuss whether the lot size requirements could be addressed in a way that would be satisfactory to the Island Board and the Commissioners. In the meantime, the County is proceeding with their GMAC planning which includes the Island.

GARDEN CLUB

All are welcome to attend the Garden Club's informal meetings on the 2nd Thursday of every month at 7 p.m. at the Hall. Occasionally meetings are held at a member's home or garden.

Many fun and educational events took place in '94 including...

- The annual **Apple Squeeze** which produced 265 gallons of cider this year.
- The **Farmer's Market** which was a big success, starts again this year June 3. Farmer's Market is held every Saturday, 10 a.m. to noon. All are welcome to sell plants, fruits, vegetables and crafts.
- The **Plant Sale** which also was a big success, is planned for May 6 this year.

Photos: Top, Saturday Farmer's Market; Middle, Damon LaJone on left and Bob Ireland on right; Bottom, Women's Club Booth, Geri Lewis



WOMEN'S CLUB

In 1919, nine Island ladies gathered at the home of Beulah Hitchcock to sew, mend, knit and visit. From this casual beginning emerged the present Island Women's Club with a 1994 membership of 85 (plus 10 inactive or honorary members). The Club meets at the Community Hall on the first Thursday of each month. Brown bag lunch meetings begin at noon and all women on the Island are welcome as guests or would-be members.

Activities are divided between fun and fundraising. A first this year was the awarding of three \$500 scholarships to Island residents payable to the college of each recipient's choice. Applications for this next year are available after May 1, 1995. Included in the Club's charitable activities are regular donations to the Saints' Pantry and Methodist Food Bank in Shelton. The years activities also included...

- a second **Craft Workshop** in May with hands-on instruction in crafts
- the **Holiday House Bazaar** at the community hall with outstanding attendance (26 tables were rented to hand-crafters and this was the major fundraiser of the year)
- a **children's carnival**
- **monthly luncheon events** that included a trip to Gig Harbor, a Hartstene Point and waterfront picnic, and a festive Christmas luncheon at the Victorian decorated Community Hall.

LOOK!

See 1995 Calendar for Upcoming Events!

COMMUNITY CLUB '94 OPERATING SUMMARY

Expenses: \$14,221.58

Income: \$12,759.38

(paid dues for membership)

Itemized Expenses:

Phone: \$378.48

Sunshine: \$26.14

Electric: \$685.20

Oil Heat: \$835.20

Supplies: \$439.49

Octoberfest: \$179.85

Postage: \$619.62

Newsletter: \$490.40

Hall Cleaning: \$470

Spaghetti Dinner: \$259.51*

Septic Tank Permit: \$200

Safe Deposit Box: \$12

Garbage: \$203.98

Maintenance: \$149.67

Furnace: \$4509.21*

Fish Project: \$47.85

Subarea Plan: \$89.94

Insurance: \$742

Prop. Taxes: \$422.75

Roadside Cleanup: \$23.01

Cook Books: \$3420.43*

Cemetery: \$15.85

* Notes: Spaghetti Dinner did generate profit;
Cookbooks are expected to generate 25%
profit; Heater was one-time expense.

According to Sam Edgin, '94 Pres., the big project for '95 will be the installation of a new septic system at the Clubsl. Costs (exceeding \$10,000) will be shared by the Hall and the local fire district. A new fire station will be built on Club property under a long term lease. "I would like to ask for donations from all property owners on the Island for this new septic system and any remaining funds will go to Club maintenance," requested Edgin.



Hammett's ginseng garden. Sawdust is spread and shade cloth covers the entire area.

GINSENG CROPS ON THE ISLAND

"For thousands of years, ginseng has been Asia's prized medicinal herb. At certain periods in history, demand for ginseng has made it more valuable than gold. While not quite as expensive today, manufactured value-added ginseng products such as teas and slices do sell at the retail level in China for as much as \$400 a pound - creating a profit margin of 300-400%," according to a Corporate Newswire article.

Garden Club President and Islander, Rod Hammett, recently planted a second half-acre of ginseng. "I start it from seed and it takes four years to mature," commented Hammett. He decided to raise ginseng after reading an article in the Wall Street Journal which claimed that it was the "most profitable legal crop" that could be grown. Hammett would be glad to answer any questions you may have on his project.



Close-up look at the ginseng plant and seeds

If you are interested in submitting an article, interesting story, photos, event or happenings...we would like to include it in our next annual newsletter. Just send your story or information to the editor, Carol Bigham-Perez, c/o Harstine Island Community Club, Harstine Islander, E. 3371 Harstine Island Road No., Shelton, WA 98584

MEMBERSHIP APPLICATION/RENEWAL/DONATIONS

Please send all dues/orders/donations to: Harstine Island Community Club, E. 3371 Harstine Island Rd. No., Shelton, WA 98584

1995 Harstine Island Community Club Dues
(Yearly Fee for new and current members —
\$5 per person/\$10per couple/family)

Donation for Property Development Fund

New Septic System

Donation for Building & Maintenance Fund

Donation for Cemetery Fund

Other

TOTAL ENCLOSED

New members welcome! A chance to get to know your neighbors, have fun and be involved in your community. Your support is appreciated.

THEATER CLUB

Enthusiastic crowds filled the community hall this past year to see the wonderful plays offered to the Island by this Club. The annual, complimentary Christmas play, *Bar None Christmas*, was presented on December 9 and 10th and was the Theater Club's gift to our community. It was written and directed by Pat Dunlap of the Harstine Island Gallery. The plays debuted two years ago and was such a hit that the Club brought it back this year. "It is popular because of its exciting story, songs, dances, and acting done by young (lots of kids) and older (Esther Goetsch)," according to Bob Helm, '94 President.

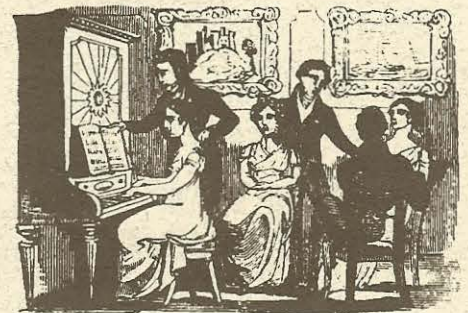
Dorie Nelson directed the chorus and provided the piano music, and Marvin Kimbel ('95 Pres.) handled the lights and sound along with helping Tom Ryan with set construction. Louie Orth directed the sound effect team, bringing the play alive with horse hooves and chuckwagon noises and more. "There can't be enough credit given to all the others who worked to make this play and the others a success," asserts Helm. The next play will be presented at the end of June.

Regular monthly meetings are held on the last Monday of the month at the hall at 7:30 p.m.

(potlucks). All members are not actors - some jobs in the Club only require "work and fun".

For more
information
on the Theater Club,
call Bob Helm,
427-0448

Check
It Out!



HARSTINE GRANGE #568

If you are interested in the pleasures of rural living, you are invited to join the Grange. The group is involved in community service, legislative happenings and contributing to scholarships. Meetings are held the third Friday of each month (6:30 p.m. potluck, 7:30 p.m. meeting) at the Community Hall.

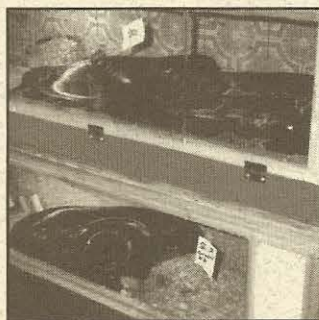
For more information, contact Warren Ireland, Master, at 426-3830 or Phil Chapman, Secretary, 426-8304.

Mark your calendar now
for the Grange's annual
Oyster and Ham Dinner
on March 12,
3:30 p.m. to 7 p.m.

Fun
Stuff

ISLAND SNAKE CHARMER

Islander, Ernie Wagner, worked for the Woodland Park Zoo for twenty-five years as the reptile curator, writing many published articles on reptile husbandry and reproduction. He decided to go into business for himself raising reptiles on Harstine Island in a secured building located on his property. He sells the animals to private collectors around the world that hear of his collection



"FOR SALE"

Burmese Pythons raised on the
Island by Ernie Wagner

from his articles and attendance at national conferences. He recently added small mammals such as hedgehogs and gerbils to his list of available animals.

Ernie will no longer offer the Burmese Pythons pictured at left after his current supply is sold—so if you are in the market for a "large" pet, now is the time to make your purchase.

CLUB MEETING AND CONTACT INFORMATION

GARDEN CLUB

Rod Hammett, 427-3089

2nd Thursday, 7:00 p.m.

COMMUNITY CLUB

Jim Anderson, Pres., 427-8701

2nd Friday, 6:00-7:30 p.m., Happy
Hour/Potluck Dinner, 7:30 Meeting

PINOCHLE (mixed)

Damon LaJune, 426-0494

1st & 3rd Saturdays, 7:30 p.m.

PINOCHLE (women)

Kay Braget, 426-8737

Call for time and dates

THEATER CLUB

Bob Helm, 427-0448

Last Monday, 6:00-7:30 p.m.

Potluck Dinner, 7:30 meeting

WOMEN'S CLUB

Margaret Loughlin, Pres.

427-9419

1st Thursday, Noon, Brownbag
Lunch Meeting



1995 CALENDAR & EVENTS

M-W-F	Aerobics taught by Denise Murchison (427-7326)	9 am - 10 am
March 11	Grange/Ham/Oyster Dinner	3:30 pm - 7 pm
April 8	All Island Clean-up	9 am
April	Women's Club Fund-Raising Event	TBA
April 29	District 5 Fireman's Auction & Spaghetti Feed	TBA
May 6	Garden Club Plant Sale	9 am - 12 pm
May 13	Pioneer Kiwanis Annual Auction	6 pm
May 27	All Island Annual Spaghetti Dinner	TBA
June	Theater Club Production	TBA
June 3	Farmer's Market opens	every Sat 10 am - noon
July	Community Club's Flea Market	TBA
August	Women's Club - Children's Carnival	TBA
September 2	All Island Labor Day Dance	9 pm
October 16	Octoberfest	6 pm
October 21	1995 Garden Club Apple Squeeze	10 am - 3 pm
December	Women's Club Holiday House and Bazaar (set after Thanksgiving)	TBA
December	Theater Club Production	TBA

***Plan Ahead for 1995!
Have a Great Year!***

COMMUNITY CLUB

If you haven't attended a monthly meeting of the Community Club (second Friday of the month), you may want to consider it in '95. The Club hosts many informative speakers and gives you a chance to meet your neighbors and discuss common concerns.

The Club also has many fun activities you may want to attend, including pinochle and an aerobics class. Many other special events are planned for the year. See the *calendar of events* on this page.

To join and help support the many beneficial activities of the Club, please mail in the application on page 3.

This newsletter is published by the Harstine Island Community Club. The Community Club, an incorporated, non-profit organization, works to improve or maintain the quality of life on the Island and to serve as a vehicle for addressing Island business in an integrated and democratic manner.

HARSTINE ISLAND COMMUNITY CLUB

E. 3371 Harstine Island Road No.
Shelton, WA 98584

*Address Correction Requested
and Please Forward*