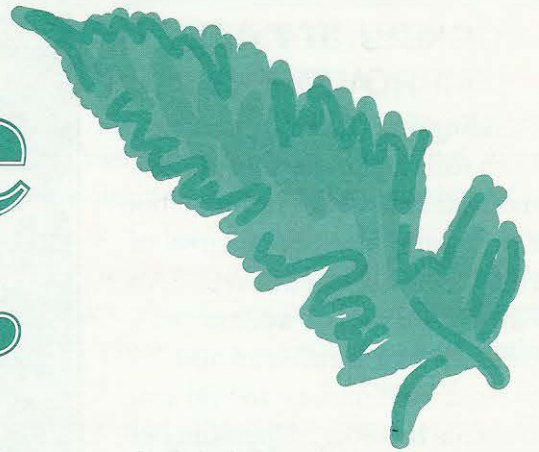


Harstine Islander



HARSTINE ISLAND COMMUNITY CLUB 1998 NEWSLETTER

We Welcome Another Year

The Harstine Island Newsletter seeks to provide the highlights of the activities of the previous year. Of course, to cover everything that occurred in 1997 would require the pages of a book. Therefore, it has been the aim of those who produced this year's publication to hit the high spots, inform the readers, and inspire those who will create the community activities that will be the basis of next year's Newsletter, 1999.

HIGH HONORS TO OUR MOST VALUED CITIZENS OF 1997

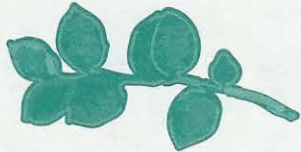
One of the very popular events of any year is the Oktoberfest celebration where sauerkraut and bratwursts reign supreme. Participants are attracted to the affair not only by these delicacies and the myriad of potluck dishes that accompany them, but also by the announcements of honors given to fellow Islanders. Nick Neuerburg was given the Outstanding Citizen of 1997, and Lucy Dike, Gene Nelson and Warren Ireland were named Honored Citizens.



From left to right, Warren Ireland, Gene Nelson, Lucy Dike, and Nick Neuerburg

COMMUNITY HALL IMPROVEMENTS

Building modification plans have been formulated for two parts of the Hall which will improve but not compromise the integrity of this historic structure. An improved ramp access will benefit the handicapped by facilitating entrance to and exit from the building. Upgrading of the restrooms will also take into consideration the needs of the handicapped as well as provide additional facilities for both men and women, *and* hot water, a long wished for convenience.



ISLAND MARKET

Farmers' Market, a long running seasonal enterprise, has become a weekly center for social and service activities during the summer and early fall. This Saturday morning event, from 10 AM to Noon, has grown steadily from a group of five or six vendors clustered on the front porch and adjacent lawn area to as many as twenty-five sellers in 1997 whose booths line both entrance drives and encircle the extended parking area. The variety of items available for sale has increased and this year many vendors protected their wares with colorful blue canopies which enhanced the total display. Those in the know can tell you that the Farmers' Market is the best place to get your mid morning coffee and cinnamon bun or apple fritter.

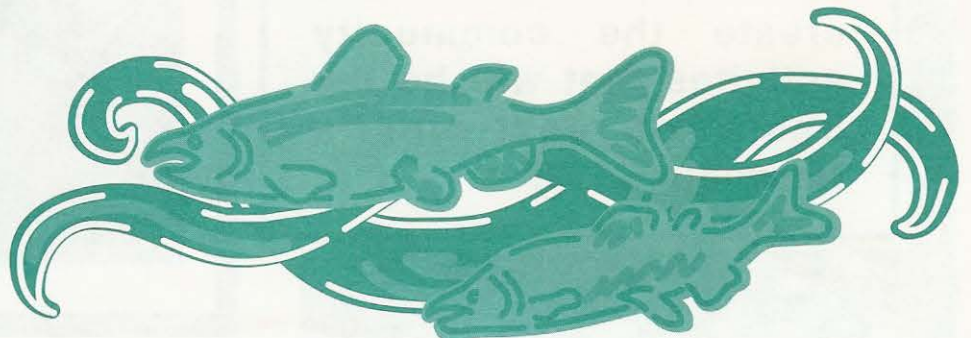


THANKS AND APPRECIATION TO FRED BURGENDORF!

Kudos are in order for outgoing President **Fred Burgdorf** and his supporting officers for a job well done and a productive year for the Community Club. In turn, best wishes are extended to President **Jack Myers** and his executive board for an outstanding 1998!

ISLAND LIVING Two events that still provide fodder for conversation are the ice storm of December 1996 that ushered in 1997, and the severing of our main underwater telephone cable later in the year. Both emergencies emphasized how quickly our island community can be isolated and force us to be dependent on our own survival efforts. Consequently, at most club meetings, dialogue and planning about emergency preparedness took place. A generator has been secured which will produce sufficient wattage to keep both the Community Hall and the new adjacent Fire Station operational in emergency situations. The two facilities will provide greater space as a staging area for communications and rescue operations, plus a temporary shelter and feeding facilities for evacuees.

CLEAN ISLAND Ecological and environmental concerns continued to be addressed in Club related activities. Recycling, well established, continued quietly but steadily. Post storm clean-up at the cemetery required extra work hours which volunteers quickly provided. The April Annual Island Clean-up Day took place with dispatch since procedures are almost second nature to organizers and clean-up crews.

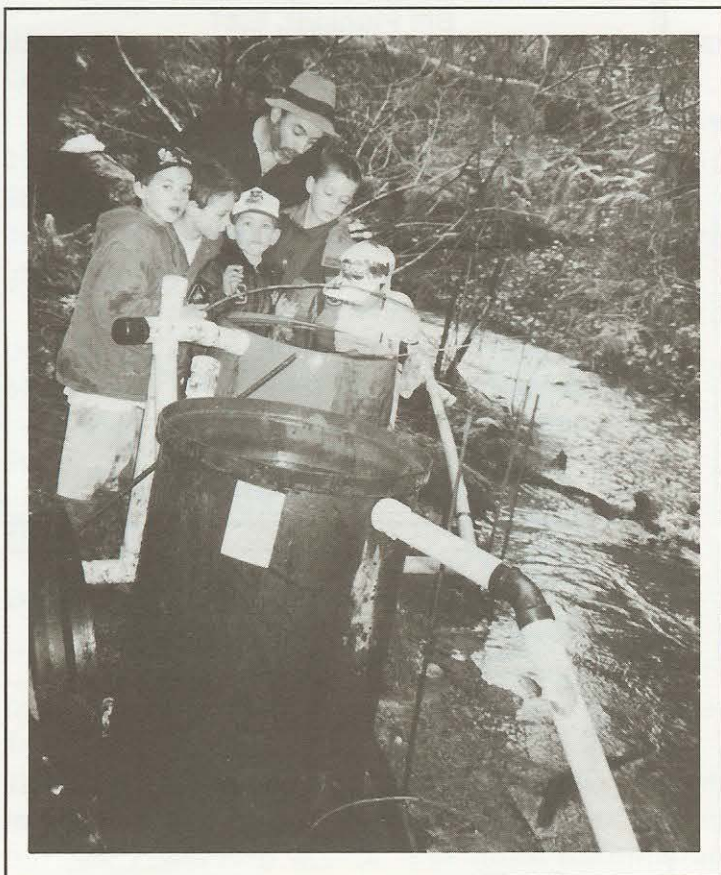


DAMON'S DINNERS A new activity was started in November and December at the Community Club which is affectionately called, "Damon's Dinners."

The reason for the name is obvious because Damon LaJune is the spark plug who generated the idea of Thanksgiving and Christmas dinners for those who had no special place to go to on those holidays.

Traditional turkey and all the trimmings along with pot luck dishes were served to 38 guests at the Thanksgiving feast and to 41 guests at the Christmas festivities. The popularity of this 1997 innovation and the social need it fulfilled indicates the probability of its inclusion on the 1998 calendar.

YEARLY FAVORITES Two annual events implanted themselves more firmly into Community Club tradition, aided and abetted by **Phyllis and Bob Carpenter**. The first event was the annual Rummage Sale, where cast-offs turn into curios, and white elephants turn into wonderful things making everyone happy. The second was the annual Spaghetti Feed which delighted record crowds. Don't miss repeats of these two events in 1998!



Cub Scouts from Pack 126 plant salmon eggs in Jarrell Creek this past January, 1998.

HARSTINE GRANGE #568 Harstine Grange celebrated its 83rd birthday on August 14, 1997. This event was followed by its observance of National Grange Week which culminated in the presentation of an Honored Citizen Award to **Morley Preppernau** in recognition of his many years of service in sports, notably soccer, for young people. This was a significant presentation because it was the first such award given by the grange after a hiatus of many years. The Grange also sponsored a team in the Mason County Basketball Association.

"Logging on Harstine Island" was the subject of the organization's 1997 Harstine Island Heritage Day presentation. This historical resource is video taped and is available along with previous presentations at the Mason County Historical Museum in Shelton. Information about them can be had by calling 426-1020.

The Grange recognized the service rendered by **Ted Boyce** in the development of Crime Watch by presenting him with an Outstanding Grange Member Award. The organization, in similar fashion, honored **Warren Ireland** for his loyal contribution as Grange Master from 1994 through 1997.

Continuing its community support, the Grange contributed food for the needy and donated \$1,000.00 toward the completion of the fire station. Also, monetary scholarships added to the financial support of three college bound students.

The Ham and Oyster Dinner, a perennial favorite, attracted 300 diners to the Community Hall where 33 grangers worked to satisfy the appetites of the large crowd with the usual tasty repast.

The Harstine Grange has been in operation since 1914, addressing community needs in a non-partisan forum aimed at suggesting and supporting legislation at local, state, and national levels. Meetings are held at the Community Hall on the third Friday of each month. For information, call Membership Chairman H.V. Glaser at 426-8871.

Fire District #5 It was good news when **Nick Neuerburg** announced at the Club's April meeting that the new fire station was operable with both fire engine and ambulance (Basic Life Support Unit) housed in the new structure. Completion of this building fulfills the decades old dream that was fueled into fruition through cooperative actions of the Community Club in land usage and upgrading of the septic system.

A 30 kw generator has been moved to the Community Hall to provide electricity during power outages and to provide emergency shelter. Final hook-up was completed by the end of January.

Many thanks to all who participated in the Annual Fire District Dinner and Auction. Half of the proceeds (\$750.00) were donated to Station 9. Also, thanks to the generous donation of \$1,000.00 from the Grange for Station 9 work.

The Club applauded the presenting of the meritorious service award to **Nick Neuerburg** and the firefighter of the year (for the second time) to **Jim Anderson** by District #5.

Local Fire District #5 personnel worked cooperatively with Crime Watch and the Community Club during 1997 to develop plans

for emergency preparedness. A CPR class was held in May at which eleven of the sixteen participants were certified.

District #5 personnel also responded to a total of 1,285 calls in 1997. Of those, 808 were aid calls, 182 fire calls, 132 paramedic assist calls, 80 service calls, 80 burn investigations, and 3 drug labs. Harstine Island calls for 1997 were as follows: 55 aid calls, 5 fire calls, 4 service calls, 3 burn investigations, and 3 welfare checks.

The District is always looking for new volunteers. If you are interested in this service to the community, call District Headquarters at 426-5533 for more information. Remember, actual fire fighting is only one of the many talents needed. Give them a call, you may fit right in!

BURGDORF CONSTRUCTION
 Bonded and Licensed
 E820 Burgundy Road
 Shelton, WA 98584
 Phone 426-8613

**Station 11 Personnel
 as of January 1, 1998:**

Lt. Fred Burgdorf, FF/MFA
Jim Jazuk, FF/MFA
Nick Neuerburg, FF/First Responder
Bill Plunkett, EMT
Mark Mottet, Recruit

**Station 9 Personnel
 as of January 1, 1998:**

Lt. Gary Hink, FF/MFA
Lorna Hink, EMT
Jim Anderson FF/MFA
Strider Klusman, EMT
Shannon Klusman, EMT
Renee Eldridge, EMT

(FF= Fire Fighter; MFA= Medic First Aid)

Harstine Island Nursery
 "Nurserymen for over 40 years"



Rhododendrons - Azaleas - Japanese Maples
 Dwarf Conifers - Rare Trees and Shrubs
 Something for every garden
 Open Daily
 426-2013
 3021 E. Harstine Island North, Shelton, WA 98584
 Just south of the Community Hall



- GROCERIES
- FUEL
- FISHING TACKLE
- ICE & BAIT
- CAMPING
- APARTMENTS
- LAUNDRY
- MOORAGE

JARRELL'S COVE MARINA
 ON BEAUTIFUL HARTSTENE ISLAND

E. 220 WILSON RD.
 SHELTON, WA 98584

Ph. (206) 426-8823

MOTTET ENDEAVORS
OFFICE & CREATIVE SERVICES

WORD PROCESSING ^
 (letters, documents, resumes, etc)
 DESKTOP PUBLISHING ^
 (brochures, business cards, posters)
 EVENT COORDINATION ^
 (parties, bizarres, festivals)

**I Can Help You
 With All Your
 Special Projects!**

CALL LAURA @ (360)427-5159

THEATRE CLUB The Club, in its efforts to bring to Harstine Island the best in dramatic and lighter entertainment, presented three productions in 1997. In February, **Ken Mikell**, cowboy story teller and folk singer, was enjoyed by packed houses on two nights. Came the 4th of July, enthusiastic Islanders and others applauded the efforts of fifty plus cast and staff as they presented **"South of the Border."** This musical comedy, in vaudeville style, was from the pen of **John Cooper**, who also directed the extravaganza.

An equally large, if not larger, cast and staff presented the Christmas show, a gift to the community, in December. **"Searching for Big Foot"** was the title of this spirited presentation which was authored by **Pat Dunlap** and ably directed by **Bob Helm**.

The Theatre Club auction took place in April of 1997 under the gavel of skilled and entertaining auctioneer, **Sam Edgin**. **Bob Helm** spearheaded this event for which he was able to arrange a refreshing program by song stylists, **Eric and Debbie Emans**.

The Club plans an ambitious program for 1997 which includes the following:

- March - **"Our Town"** by Thornton Wilder
 Directed by Gene Nelson
- July - **"Four for the Money"** by John Cooper
 Directed by the Author
- Fall - Children's Theatre offering TBA
 Directed by Vikki Shanahan
- Dec. - Christmas Show, Title, Author and
 Director TBA

The Theatre Club thanks the Community for its loyal support in the past and invites you to enjoy their 1998 productions.

The Theatre Club meets on the last Monday of each month and invites you to join and be a part of this fun and rewarding group. For more information please call John Cooper at 426-0162.

THEATRE FOUNDATION The Harstine Island Theatre Foundation was established in 1995 with the purpose of building a cultural center for the performing and creative arts on the Island. A parallel organization to the Theatre Club, the Foundation rounded out the bill of entertainment fare for 1997 by providing a sample of the range of offerings the group envisions for the future.


At one end of the spectrum, the excellent concert provided by the **Yakima Community College Chamber Singers**, under the baton of **Dr. Scott Peterson**, charmed a capacity crowd with vocal selections from Bach to Jazz at the Community Hall in March. Another point on the spectrum featured the Big Band sounds by **Stan Yantis's** 17 piece group, **Spring Fever**, which nostalgically transported participants back to the night of their Senior Prom. This event took place on May 31st, the traditional Memorial Day.

Four hundred surveys, filled out by Islanders and returned to the officers of the Foundation in December, showed an almost 100% enthusiastic support for its Center Concept. This favorable response gives an impetus for greater efforts by the Foundation group to make the dream come true.

Want to know more? Please call Gene Nelson at 427-8699.

SHELTON
 2215 OLYMPIC HWY N
 PO BOX 70
 SHELTON, WA 98584

OFFICE 360 426-3319
 FAX 360 427-8649
 V-MAIL 360 705-5690
 RES 360 426-7092



MARTIN KINSLER
 GRI
 MARKETING SPECIALIST

QUALITY STREET®
John L. Scott
 REAL ESTATE

THIS OFFICE INDEPENDENTLY OWNED & OPERATED


 Chef
Evelyn Enslow
 C.E.C., A.A.C.
 427-2417

BRIDGE COMMUNITY CHURCH The Church holds its Sunday School and Services in the Community Hall and celebrated its first anniversary on November 9, 1997. Sunday School began March 2, 1997, four months after the first church service was held. The work of the church has prospered and increasingly people have discovered this place of worship where they can go to know the Lord.

The Church continues into its second year of activities and increasing membership under the operating agreement which was re-negotiated with the Community Club Executive Board in October of this past year.

For information about the Church and the Sunday services, contact Pastor Howard Spear by calling 426-5221.

HARSTINE ISLAND CRIME WATCH

The Harstine Island Crime Watch (HICW) is nearing the end of its second year of operation. The success of their activities has been tremendous.

The Mason County Sheriff's Department occasionally sent representatives to crime watch monthly meetings to report that crime has decreased countywide where crime watch organizations have been active; and Harstine Island is no exception.

HICW currently has approximately 30 patrol volunteers. Each patrol volunteer spends at least two hours one day a month traveling all county roads (and with permission, some private roads) on the Island. It is the patroller's job to note and report suspicious and criminal behavior to the sheriff's department. HICW members, whether on a designated patrol or not, are always on the look-out. These patrols show a strong crime watch presence on the Island by displaying magnetic signs on their vehicles which read, "Neighborhood Watch Patrol." These signs give two messages; one, "we are looking out for the safety of our neighbors," and secondly, "Criminals, beware!"

HICW is also working with the community's Emergency Preparedness Committee in developing patrols for emergency rescue and checks on some of our more elderly or medically/physically challenged residents.

The efforts of HICW to decreasing crime are much appreciated by fellow Harstine Island residents and property owners. Throughout the year, HICW has received many letters and donatons thanking them for its efforts. HICW would like to take this opportunity to say a big "Thank You" back to all of you, including the Harstine Island Community Club and Fire District #5, Station 11 for allowing HICW to meet in their facilities.

The Harstine Island Crime Watch meets the third Wednesday of each month at 7:00 p.m. at the Community Hall. While they have been successful at their current efforts, there is still much more work that could be done with the help of others. Please, get involved and help HICW make Harstine Island the safest place to live in Mason County. For more information please contact Laura Mottet, secretary, at 427-5159.

PROPERTY SAFEGUARD SERVICES
"We look after your property when you can't or don't want to."

Scheduled Security Checks		Storm Damage Control & Repairs
24 Alarm Response	WA State License #411 Insured	Regular Maintenance

Schedule a Consultation Today!
Call Mark @ (360) 427-5159

MIKE GLASER
 Licensed and Bonded



MIKE GLASER PLUMBING
 Residential • Commercial & Repair

E. 1450 Ballow Rd.
 Shelton, WA 98584

Telephone
 (360) 427-1228



PICKERING MARINE
 E 3400 Pickering Road
 (360) 427-7876
 Dudley & Barbara Cooney

Authorized Service & Repair
 of Evinrude & Johnson Outboards
 OMC/Cobra/Volvo/Penta Stern Drives

9:00 am - 6:00 pm
 Monday thru Saturday
 & by appointment

WOMENS' CLUB As is the case with other clubs affiliated with the Community Club, the Womens' Club, with its benevolent activities, reaches out to benefit others beyond the confines of Harstine Island. Such was the case this year when the Club gave monetary aid and foodstuffs to the needy within the Pioneer School District. Also, the Club continues to award annual scholarships to young people in the pursuit of higher education.

Notable among other activities by the Club is its continued promotion of its traditional luncheons and picnics, accompanied by interesting and inspirational programs at its monthly meetings. Of special interest this past year was a fashion show, sponsored by the Mason General Hospital Foundation's **Treasures** thrift shop, featuring club members as models. Also looked forward to by the whole island was the always successful Childrens' Carnival, originally conceived and headed up by **B.J. Beauchene**, who this year passed the leadership to **Mitzi Kilker**.

Another popular traditional event put on by the Club was the annual Holiday House Bazaar, expanded this year to embrace the new District #5 fire station next door to the Community Club building as well as the Community Hall itself. No less than thirty eight vendors displayed their wares this year at the event.

Still more: the Sewing Group, meeting each month at different members' homes, continued to provide sociability and creative opportunities for skilled fingers.

The Harstine Island Women's Club meets each month (except July) on the first Thursday and Island women are encouraged to attend to meet new friends and to enjoy entertainment and lunch together. This is a brown bag affair with dessert furnished. This Club has emerged from a very small group formed near the turn of the century to become a very large and active auxilliary to the Community Club. For more information, please contact Marian Cofield at 427-0153.



Mrs. & Flowers Nursery

- Specializing in Miniature Roses
- Plants & Planter
- Hand Crafted & Unique Gifts
- Floral Design . . . Special orders



Patricia LeClair
(360) 426-0797
E. 97 Wilson Rd
Harstine Island

GARDEN CLUB The theme for 1997 seemed to be bigger and better. That theme was certainly true in the case of the Annual Garden Club Plant Sale in May. Outdoors and indoors, a bountious collection of plants, blooms and ornamentals transformed the Community Hall into a nursery. Avid buyers soon began to reduce the luxuriant display, taking home armfuls of the products provided by local green thumbers.

A cool, crisp day in October was the setting for the yearly apple squeeze. The popularity of this event resulted in an early sell-out of cider, caramel covered apples, sausage sandwiches and goodies. It was an inter-generational affair with more than twenty young people assisting in the processing of the apples and the production of cider.

The Garden Club meets on the second Thursday of each month. Any interested person is welcome to join the Club. There are no dues and the meetings are very informal with coffee and cookies or even gourmet offerings made from products of our gardens, including an occasional glass of homemade wine. Meetings sometimes feature expert gardeners as speakers, and Club members travel to small orchards or interesting gardens. For more information please contact Rod Hammett at 426-3089.

Harstene Island Gallery

P.J. and John Dunlap
E 970 Maples Road
Shelton, WA 98584
5 1/2 miles south of bridge on Harstine Island

Pottery
Water Colors

Phone (360) 426-8840
Studio open weekends only
Saturday and Sunday, 12 pm - 5 pm

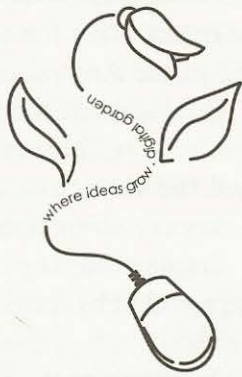
Home 426-4797
Mobile 490-2168
John Campos
E. 180 Island Shores Rd.
Shelton, WA 98584

Fully Insured
Licensed
State UBI #
601543993



J.S. CAMPOS LOGGING

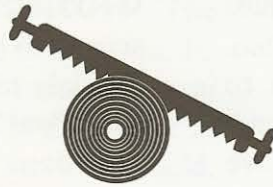
Low Impact, Quality Logging
Dump Truck & Transport Service
Located on Harstine Island



Digital Garden

Graphic Design
Illustration
Desktop Publishing

Barbara Campbell
432-8535



Sheltonville Properties

Real Estate
Sales and Appraisals

M. S. Preppernau

Owner, Broker
Certified General Appraiser
#27011PREPPMS572BJ

E. 20 FOX LANE
P.O. BOX 514
SHELTON, WA 98584

360-426-9791
Fax 360-426-9605

Club Meeting and Contact Information



Community Club

Jack Myers - 427-1569
2nd Friday of each month
6-7pm Happy Hour/Potluck Dinner
7:30 pm meeting



Garden Club

Rod Hammett - 426-3089
2nd Thursday of each month
7 pm



Pinochle (Mixed)

Damon LaJune - 426-0494
1st and 3rd Saturdays of each month
7:30 pm



Pinochle (Women)

Kay Braget - 426-8737
Call for time and dates



Theatre Club

John Cooper - 426-0162
Last Monday of each month
6:30 pm Potluck
7:30 pm meeting



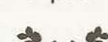
Womens Club

Marian Cofield - 427-0153
1st Thursday of each month
12 Noon, Brown Bag Lunch



Crime Watch

Laura Mottet - 427-5159
3rd Wednesday of each month
7 pm



BOOK YOUR SPACE

The Community Hall is used for many non-scheduled events on a rather steady basis, such as weddings, anniversaries, civic meetings, funeral gatherings, etc. During 1997, eleven such activities were held during the months of June through October alone. If you wish to avail yourself of the use of the hall, please contact Laura or Mark Mottet at 427-5159.



Cyndy's Souper Soups

Call
360.427-2567

Andrej's Fine Woodworking



PAIN RELIEF

New PAIN RELIEF Therapy now available for in-home use. Treatments are very effective in a variety of acute and chronic pain conditions. For a FREE demonstration of this new PAIN RELIEF Therapy in the comfort of your home call Toll Free: 1-888-956-PAIN or 360-427-2567.

If you are interested in submitting an article, interesting story, photo, event or happening, we would like to include it in our next annual newsletter. Just send your story or information to:

HICC Newsletter
P.O. Box 1635
Shelton, WA 98584

1998 Calendar of Events

Community Club 1997 Operating Statement

Date	Function	Time
March 14th	Grange Ham & Oyster Dinner	TBA
March 25 - 28th	Theatre Club presents "Our Town"	TBA
April 18th	Children's Acting Workshop	11 am - 3 pm
May 2nd	Garden Club Plant Sale	TBA
May 23rd	Community Club Spaghetti Dinner	TBA
June 6th	Opening Day of Farmers' Market	TBA - Noon
June 27th	Community Club Rummage Sale	TBA
July 2nd - 4th	Theatre Club presents "Four for the Money"	TBA
Aug. 8th	Women's Club Carnival	TBA
Aug. 29th	Labor Day Dance	TBA
Sept. 4 - 5th	Theatre Club Children's Show	TBA
Oct. 9th	Octoberfest	TBA
Oct. 17th	Apple Squeeze and close of Farmers' Market	10 am - 3 pm
Nov. 3rd	Election Day	reg. poll hrs.
Nov. 26th	Damon's Thanksgiving Dinner	TBA
Nov. 28th	Holiday House	10 am - 3 pm
Dec. 11th - 13th	Theatre Club Christmas Show	TBA
Dec. 25th	Damon's Christmas Dinner	TBA
Dec. 31st	New Year's Eve Pinochle Potluck	TBA

Newsletter Crew

Reporting John Cooper
Design and Layout Barbara Campbell
Consultation Don Nichols
Advertising Nonie Neuerburg
 Thanks to Morley Preppernau for providing the mailing list and labels. Thanks to all who helped with folding and stamping. And a special THANK YOU to all of our advertisers for your loyal support!



EXPENSES: \$ 6,700.16
INCOME: \$ 10,240.64

Itemized Expenses

Administrative

Bank Charges \$ 20.00
 Insurance 746.90
 Member Services 22.20
 Awards 25.96
 Permits/Licenses 18.75
 Postage 84.80

Fundraiser

Rummage Sale \$ 154.63
 Spaghetti Dinner 452.81
 Octoberfest 67.21

Property Management

Building Maintenance \$ 609.85
 Fuel Oil 888.08
 Utilities 1,300.04
 Water System Maintenance 36.00
 Cleaning 342.06
 Taxes 424.05
 Supplies 437.33

Newsletter

Design & Print \$ 677.18
 Mailing Costs 375.21

Designated Funds

Water System \$ 18.00

Itemized Income

General

Rental \$3,873.00
 Dues 1,315.00
 Interest 75.76
 Fire Dept. Lease 480.00
 Gifts and Donations 45.00
 Newsletter Ads 100.00

Fundraiser

Cookbook \$ 998.00
 Rummage Sale 865.66
 Spaghetti Dinner 1,455.94
 Recycling 129.28

Designated Funds

Building Maintenance \$ 595.00
 Prop. Development 5.00
 Septic System 305.00

Community Club
Membership Application/Renewal
Harstine Island Community Club Annual Dues,
\$5.00 per person age 18 and over

Name: _____

Address: _____

Street

City

State

Zip

Phone: _____

If you wish to make a donation to any of the organizations or funds listed below, please indicate amount in space provided.

Hall Maint. Fund \$ _____ Cemetery Fund \$ _____ Women's Club \$ _____

Garden Club \$ _____ Theatre Club \$ _____ Theatre Found. \$ _____

Crime Watch \$ _____ **Total Enclosed** \$

Mail to: HICC, P.O. Box 1635, Shelton, WA 98584

Note: Please do not send Club Dues **other than** the Community Club with this coupon. The club you choose to join should be contacted directly.

Cut on dotted line and enclose with your check. Thank you!

COMMUNITY CLUB

If you haven't attended a monthly meeting of the Community Club (2nd Friday of the month), you may wish to consider it in 1998. The Club hosts many informative and entertaining guests and gives you a chance to meet your neighbors and discuss common concerns.

The Club also puts on many events which are fun for the whole family. Special activities are planned throughout the year (see our Calendar of Events).

Perhaps you would like to reserve the hall for an occasion such as a wedding, reunion, anniversary, memorial, etc. If so, please contact **Laura Mottet, Scheduling Coordinator, at 427-5159.**

This newsletter is published by the Harstine Island Community Club. The Community Club, an incorporated, non-profit organization, works to improve and maintain the quality of life on the island and to serve as a vehicle for addressing Island business in an integrated and democratic manner.

Like other operating expenses at the Hall, the production costs of this letter are paid because of your faithful and timely payment of Club dues. If you would like to show additional support of the letter beyond your usual dues, please show that amount in the corner of your check. We thank you in advance for your kindness!

**Harstine
Islander**



HARSTINE ISLAND COMMUNITY CLUB 1998 NEWSLETTER

Harstine Island
Community Club
P.O. Box 1635
Shelton, WA 98584