

Harstine Islander



2011



Produced by Harstine Island Community Club



*"Early Sunset-Trees" is featured in the 2011 Harstine Island Community Club 'Land' calendar.
Photo by: Betty Welfringer*

The Community Hall at the heart of the Harstine Island Community Club welcomes all Islanders; opens its doors to wonderful experiences and gatherings. Please join us!

www.harstineecc.org

Past President, Bill Burrows



This past year saw some great volunteer activity that generated funds to make improvements in the Community Hall. Our thanks go to the volunteers who make the annual events, such as the Rummage Sale, the Spaghetti Feed fundraiser, the Thanksgiving dinner, and the New Year's Eve Dance possible. All of these events were well attended and enjoyed by all.

We also had two special events that deserve a big thank you. First, we thank Sandy Murphy who spearheaded the "Rally Round the Flagpole" campaign. Her efforts resulted in the sale of almost 300 bricks that were installed by a gang of volunteers. In addition, a new bronze plaque was placed on the flag support that acknowledges the sacrifices of our Island veterans.

The second special project was the production and sale of 2011 calendars. Photographs from Island residents were submitted and then selected by HICC members to produce 3 different calendars. Kayce Benson worked very hard with the help of other volunteers to get the calendars printed and they were sold at various events during the Fall.

As a result of this fundraising activity, we were able to purchase and install a new propane stove and range hood for the kitchen in the Community Hall. The new stove has six burners and a large oven. The range hood, which has a 900 cfm blower, replaced an old bathroom vent that was not very effective. Some minor remodeling of the kitchen island was needed to accommodate the new stove and as a result, the counter surface was replaced as well.

Thanks to everyone for all the help.

Bill



President Jeff Roberge & Past President Bill Burrows

As I write this I have now been president of the Community club for two months. I have attended two board meetings and have presided over two community club meetings. I have thoroughly enjoyed these moments and all of the new people I have met.

It didn't take long for me to realize that I was the guy that was supposed to fix everything. At some point I will probably have to learn to delegate or at least learn to ask for help. I am always open to any and all suggestions. If you have suggestions and you want to take on the task that would be even better.

I hope you have as much fun this year as I am having. Also, I do appreciate a few hecklers in the crowd so feel free to let me have it.

Jeff



President, Jeff Roberge

<http://www.wa-grange.org>



Grange #568 Harstine Island

Established in 1889, two months before Washington Territories achieved statehood, the Washington State Grange is a non-profit, non-partisan organization dedicated to improving the quality of life of Washington's residents through the spirit of community service and legislative action.

The Harstine Grange was founded October 19, 1914. It meets at the Community Hall the third Friday of each month; potluck dinner at 6:30 p.m. followed by a meeting at 7:30 p.m. Grange projects include the Annual Ham & Oyster Dinner as the major fundraiser. Proceeds fund the Dictionary Program. Stuffed toys are made by Grangers and donated to local hospitals. Hearing aid batteries are collected and recycled to assist the less fortunate. Annual donations to Saint's Pantry Food Bank in Shelton are made. The traffic triangle on the island side of the bridge was planted and is maintained by the Grange. The large map of Harstine Island on the island side of the bridge was created and furnished by the Grange. The Grange works in conjunction with other island organizations to maintain cemeteries, assist with meals for memorials and earn funds to maintain the Community Hall.

Harstine Honey



Bill Shoaf, Beekeeper
Arborist, Woodworker
runningasawolf@gmail.com
(360) 670-9645
4850 E. Pickering
Shelton, WA 98584



Providing Safe Haven,
Education and Conservation

Volunteer Opportunities
Tours Available

Wild Felid Advocacy Center of Washington

(360) 427-4466 3111 E. Harstine Island Rd. N.
www.wildfelids.org

HICC Financial Report 2010

Beginning Balances:

Savings: \$ 5,666.99
Checking: \$ 8,660.25
TOTAL: \$14,327.24

2010 INCOME

Membership Dues: \$ 5,155.60
Donations: 7,369.95
Fundraisers: 14,962.95
Hall Rental: 4,340.00
Insurance Contrib: 1,500.00
Newsletter Ads: 727.50
Misc. Income: 193.47
Sponsored Events: 1,880.00
TOTALS: \$36,129.47

Ending Balances:

\$ 5,679.14
\$ 6,111.48
\$ 11,790.62*

2010 EXPENSES

Administration: \$ 5,879.36
Building Maintenance: 10,766.63
Fundraiser Expenses: 7,166.82
Utilities: 4,558.94
Insurance: 4,339.00
Newsletter: 1,588.05
Hall Supplies: 1,353.39
Sponsored Events: 2,145.10
TOTALS: \$37,797.29

*(Not included in the above income total is the Chase Estate Scholarship Womens Club donation of \$100,000.00 that is held for the Womens Club by HICC).

Reserve
the
Community
Hall for
your next
event!



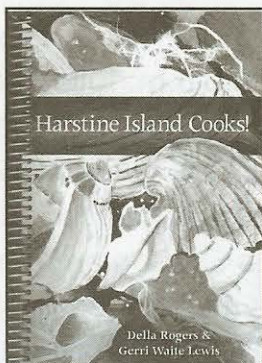
Call:
Pam Niemi-
Wood
(360) 427-6655



Don't forget to bring your cans and non-ferrous metals to Fire Station #9! Pennies become dollars and dollars multiply to benefit local organizations. Nick Neuerberg is carrying on the Bud Glaser aluminum recycling and charitable giving program.



In the 1940's there were about nine or ten grape growers on the Island. They sold tons of grapes to the Werberger, St. Charles, Davis and Stock Wineries.



Special thanks to our local businesses for their advertising contributions - without which we would not be able to produce this Newsletter.

We are grateful for your continued support. Please mention that you viewed contributors ads in the Harstine Islander when contacting or visiting their establishments.

THANKS!



Harstine Island Cooks!

This wonderful all volunteer effort features 375 delicious recipes collected from 110 Islanders. Recipes include many original, never before published creations, adaptations and even some "family secrets"!

Mail Order \$19.50 (Check):

Cost: \$15

P.O. Box 1635, Shelton, WA 98584

Available: Harstine Farmers Market, Sage Book Store,

Arts & Flowers Nursery, Jarrell's Cove Marina Store, most Island events, or call: Della Rogers 427-3738

Women's Club • Women's Club • Women's Club • Women's Club • Women's Club • Women's Club • Women's Club • Women's Club

Harstine Island Women's Club

Established 1916

Who We Are The Women's Club provides a format to meet neighbors and become involved in the community.



Fund Raising If you want to show off your association with Harstine Island, there are logos galore at the Women's Club booth at the Saturday Market. Sweatshirts, fleece vests, denim shirts, visors and of course T-shirts are some of the clothing items available. License plate holders and mugs are part of the various choices. The book, *The Island Remembers*, which gives a historical view of the island is also available - as well as our cookbook, *Harstine Island Cooks!* Many of these activities raise funds and the use of those funds is another important part of Women's Club.

We provide scholarships for local students, contribute to Pioneer School and local food banks, and help with the expenses of keeping the Community Hall insured and in shape.

People who enjoy sewing meet monthly in each others homes on the fourth Tuesday from 10:00 to 2:00 to share handiwork, relaxation and lunch. Join us at Women's Club and experience the feeling of belonging that only a small community can offer.

Social activities include the monthly meeting (except July) where members gather for camaraderie and programs. Lunch is either a brown-bag along with a provided dessert or one of our theme lunches.

Holiday House is a popular venue which showcases hand-crafted items, a perfect way to start your holiday shopping. It is held the Saturday after Thanksgiving at the Community Hall and Fire Station.

Kids' Carnival is held on the 2nd Saturday in August. Young people and adults work together to provide a fun-filled day for the children. There are games, clowns and prizes. A great activity for children and grandchildren!

Memorial Lunches When someone from the island passes on, the women provide a memorial lunch at the Community hall. It's a service that allows the family to grieve, as well as feel the sense of community the island provides

<http://shelton.site11.com>

Women's Club • Women's Club • Women's Club • Women's Club • Women's Club • Women's Club • Women's Club • Women's Club

Women's Club • Women's Club • Women's Club • Women's Club • Women's Club • Women's Club • Women's Club • Women's Club

Women's Club • Women's Club • Women's Club • Women's Club • Women's Club • Women's Club • Women's Club • Women's Club



HONORED CITIZENS - 2010



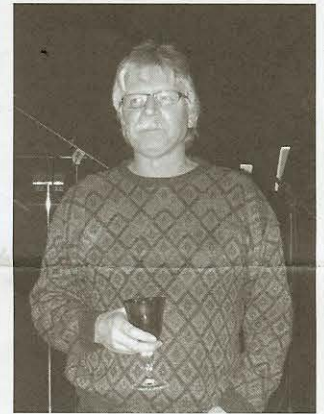
Anne & Dudley Panchot

Citizen(s) of the Year

This year the Citizen of the Year is a couple, Dudley and Anne Panchot. They are the dynamic duo who always have their fingers on the pulse of the Island. Several years ago Dudley ran for HICC President - supported by Anne. During his term as president and after as a board member the process of how we do business was streamlined and important steps were taken to make HICC sustainable. Over the years Dudley has been dubbed "Mayor of the Island." This husband and wife team worked tirelessly spearheading the successful effort establishing HICC as a 501(c)3. With a non-profit status

designation secured, the Women's Club was able to accept a substantial financial gift to perpetuate its scholarship fund. Dudley continues to wear his HICC hat, providing legal support on an ongoing basis and its umbrella organizations. Much thanks to Anne and Dudley.

Mike Plomski has helped with the Kids' Carnival so many times the Women's Club lost count! Mike has helped with one its biggest tasks - getting games to and from the Hall parking lot. He ran the Pioneer kids' basketball league for several years and coached boys soccer for many years. He has been in many of the Theater Clubs' presentations and directed last summer's play - "The Radio Show." The Island recognizes Mike's hard work with sincere thanks.



Mike Plomski

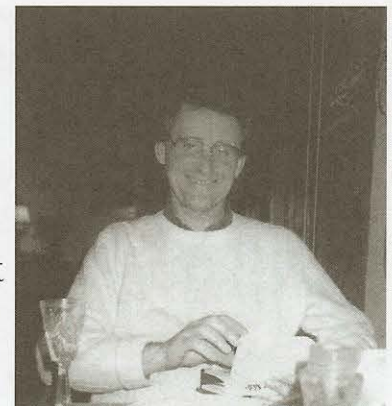


Arlen Morris

Arlen is an organizer with a capital "O". She is an idea person, visualizer, implementer, delegator and doer. Over the years she has chaired and lent her help and support to a variety of Women's Club holiday luncheons and events - including chairing the 2009 Winter Celebration, 2008 Cinco De Mayo, 2007 Scandinavian Winter Celebration and others. In 2009 she organized the 40th Anniversary celebration of the Harstine Bridge parade, creating a CD. From HICC vice president to program director, Garden Club Apple Squeeze, plant sale to chairing the All

Island Garage Sale, she is a virtual "energizer bunny." She also brought us yet another program called Inquiring Minds. Thanks for everything Arlen!

The Honored Citizen award was also presented to Charley Allison who has passed away. As Jim Anderson said, "his ideas still live on." Charley was active in the community when Anderson first moved here; taught him and everyone else about the idea of community. Allison's family has been on the Island since the mid 1800s. He was an early HICC president and one of the initiators of the potluck idea. He would bring a salad so big that it could have fed an army. Allison was also one of the founders of the Olympia Farmers Market. He loved gatherings and community. Every summer he would open his house as a place to gather and talk. Charley's award was accepted by his nephew Peter Allison.



Charley Allison



On Beautiful
Harstine Island

Gas & Diesel - for Cars & Boats
Apartments
Guest & Permanent Moorage
Picnic Area • R.V. Sites
Groceries • Ice • Bait

Gary & Lorna Hink, Owners

220 E. Wilson Road • Shelton, WA 98584
(360) 426-8823 • (800) 362-8823 • Fax (360) 432-8494



SPECIAL OCCASION?

**The Harstine Island
Community Hall has many uses.
One of those being an "extension to
your home" for family functions.**

The entire Hall can be rented or the kitchen/dining side separately. Wonderful for big family dinners, holiday functions, birthdays, showers, weddings, receptions, anniversaries, meetings, memorials, etc. Great for childrens parties with plenty of room for games. Complete with restrooms, full kitchen, coffee urns, tables, chairs and plenty of parking - the Community Hall is ideal for gatherings large or small.

Your \$15.00 yearly Community Club dues give you great discounts on rental fees. Call Pam: 427 - 6655

WHERE CAN
WE HAVE IT??

Jennifer Rosendale
Licensed Massage Practitioner
License # MA00014201

670 E. Strong Rd.
Shelton, WA
98584
(360) 490-7012

jenlighthand@hotmail.com

Food Healing
Reflexology
NMT
Hot Stone Massage
Thai Techniques
Lower Back

Don't Dump It, Donate It!

Open: Thurs—Sat.
10-5:30pm

Shop for new and gently
used home improvement
materials.

Belfair Store:
22653 State Route 3
Belfair, WA
360-275-9118

Shelton Store:
205 W Cota Street
Shelton, WA
360-426-2198

 **Habitat for Humanity**
of Mason County

Store

To rent
or schedule
the Harstine Community
Club Hall contact:
Pam Wood @ 427-6655

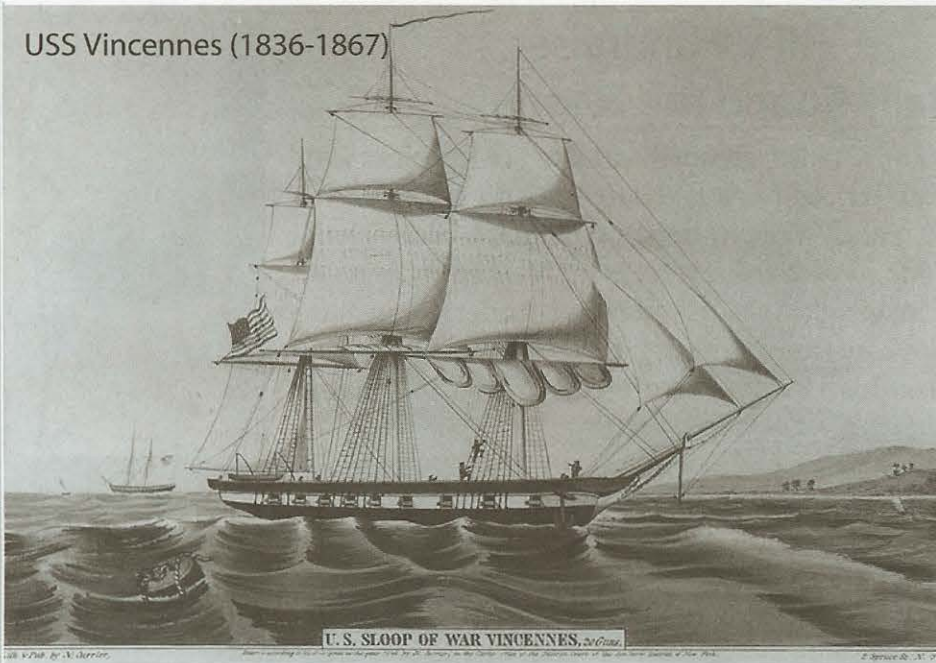
Join the Family




Peninsula
CREDIT UNION

800-426-1601 • www.pcfcu.org
SHELTON, BELFAIR, PORT ORCHARD
POULSBO, PORT TOWNSEND

USS Vincennes (1836-1867)



*Excerpt from
THE ISLAND REMEMBERS*

On a misty morning in 1841 a 780 ton sloop dropped anchor off Fort Nisqually and the crew began lowering boats carrying parties of surveyors. Civilization had come to Puget Sound.

The U.S. Vincennes was on a final leg of a four-year exploratory voyage.

Among the men with Commander Charles Wilkes were Thomas Budd, Henry Eld, T.R. Peale, A.L. Case, Henry J. Hartstein,

Overton Carr, George Totten, Michael Drayton, John Cooper and James Dana. Their names were given to many of the geographical features of Puget Sound. Wilkes named two islands lying north of Olympia but one of the choices was not popular and the spelling of the other is disputed to this day. --- Although spelled "Hartstein" on the ship's log there are currently at least five ways to spell this Island's name: Harstine, Hartstein, Hartstine, Harstene and Hartstene.

More fascinating history about Harstine Island can be found in The Island Remembers. Get your copy from the Harstine Island Women's Club - \$10.00

**Island
Reflexology**
(Harstine Island)

Pam Niemi-Wood
Certified Reflexologist/
Reiki Practitioner

(360) 427-6655

Great Treat for Your
Hands & Feet!
(Your place or ours)



Daniel Frishman
BROKER

OFFICE (360) 426-2646
CELL (360) 490-2168
FAX (360) 426-2698

daniel@windermere.com

Windermere
REAL ESTATE



Lynch Creek Floral

331 W. RAILROAD AVE • P.O. Box 310

SHELTON, WA 98584

(360) 426-8615



Colleen K. Hunter



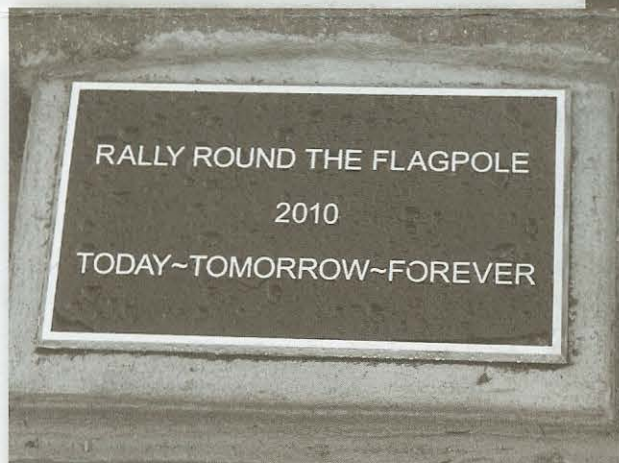
HICC Fundraiser

Rally Round the Flagpole 2010

The Community Club's commemorative brick project was a resounding success! We sold 310 bricks for a total of \$10,610.00. Sandy Murphy began selling at Holiday House 2009 and ended with the last Farmer's Market in October 2010. Our installation team lead by Jim Anderson, included Leo Echaniz, Lary Houghton, Bob Lemon, Doug Otjen, Gary Benz and Jim Irving. The project was completed just before Christmas and looks fantastic.



Thank you to the Islanders who purchased bricks and are now "A Permanent Part of Island History". Next time you are at the Hall, take a little time and enjoy reading the bricks!



The bricks get some final special touches

BRIDGE COMMUNITY CHURCH



500 E. North Island Drive
1/2 mile left from Harstine Bridge



www.bccharstine.org

Bible Classes 9:30 a.m. Worship 10:30 a.m.

Pastor Howard Spear

Welcome All

Mail address: 153 E. Rolling Hills Dr., Shelton, WA 98584

Phone: 360-426-5221 Email: whs803@hctc.com

TO KNOW CHRIST AND TO MAKE HIM KNOWN



203 WEST RAILROAD AVENUE | SHELTON, WA 98584
360-426-4407 | ANGELA@STEVENSOnRAILROAD.COM

Angela & Nathan Hickson
OWNERS

Kern Dolby
EXECUTIVE CHEF

www.StevensOnRailroad.com

GARDEN CLUB



Membership is open to all who are interested in gardening and gardens. Meetings often focus on gardening issues, speakers, and destination garden visits.



SATURDAY MARKET

The Saturday Market provides an opportunity for local farmers and artisans to sell their wares.

HICC organizations also have tables where visitors can purchase items that help support the Community Club.

Open to anyone on island or off with homegrown vegetables, fruits, plants, handmade or handcrafted items.

Also represented are community service organizations and HICC Clubs.

THE GARDEN CLUB'S MISSION IS TO MAINTAIN THE GROUNDS OF THE COMMUNITY HALL AND OTHER PUBLIC SPACES ON THE ISLAND. IT ALSO CONTRIBUTES TO THE MAINTENANCE OF THE COMMUNITY HALL AND SERVES AS AN ENVIRONMENTAL RESOURCE FOR ALL.



Live Music!!

Apple Squeeze - October 2010

2011 Apple Squeeze

Saturday, October 8 @ 10 a.m.

Join the community for this annual event. Fun for the kids... juice for all!

Want to receive Island crime tips, alerts, health and safety information right in your inbox?

Get onboard with the

ALL ISLAND EYES EMAIL NETWORK

For information contact:

harstineneighborhoodwatch@gmail.com

Bill Bingham & Assoc.

Backhoe - Hauling - Bulldozing
Septic System Installation and Design

(360) 426-3447



BILLBA*161DB

Lady of the Lake

Gifts and Fine Home Furnishings

Unique Home Accessories for Cabin to Castle

1085 E. Pickering Road, Shelton, WA
[Across from Spencer Lake Resort]

Phone: (360) 426-8632 / 427-0513

Email: antiqueluvr@gmail.com

Open Thursday to Monday 10-5
Consignment by Appointment

'ALL ISLAND EYES NETWORK'

Harstine Neighborhood Watch - harstineneighborhoodwatch@gmail.com



Working in Cooperative Support For Our Island Community

Our Mission is to continually work, create and maintain a positive atmosphere that actively supports the efforts and goals of our Island Community, the Sheriff's Department, Fire-Emergency Services, the Parks Department and the enjoyment of living in Mason County.

IMPORTANT INFORMATION



Harstine Island Community Club

Contact: Jeff Roberge, 432-0710

Programs: Ken & Sandy Kramer, 427-2663

Monthly meetings held on the second Friday of each month. Happy hour and Potluck @ 6 p.m.

Meeting @ 7 p.m.

Garden Club & Farmers Market

Contact: Jim Anderson, 427-8701

Second Thursday @ 7 p.m.

Farmers Market

Saturdays: 5/28 - 10/8 - 10 a.m. to Noon

Grange #568

Contact: Mike Burdick, 427-1559

Third Friday: Potluck @ 6:30 p.m. Meeting @ 7:30 p.m.

Harstine Community Choir

Contact: Elizabeth Berndt, 432-9940

Sunday: 4-6 p.m.

Neighborhood Watch

Contact:

harstineneighborhoodwatch@gmail.com

Senior Lunch

Contact: Barbara LaJune, 426-0494

Every other Wednesday @ Noon

Theater Club

Contact: Lorna Hink, 426-8823

Last Monday: Potluck @ 6:30 p.m. Meeting @ 7 p.m.

Women's Club

Contact: Patti Chapman, 426-8112

First Thursday: Brown bag lunch

(Dessert & coffee provided)

Community Emergency Response Training

Contact: Nick Neuerberg, 427-5521

Third Thursday @ 7 p.m. - Station 9 next to Community Hall

TOPS #W1402

Contact: Carol Lettich, 427-0889

Mondays @ 9 a.m.

Pinochle Club

Contact: Barbara LaJune, 426-0494

Mixed first and third Saturday @ 7 p.m.

Contact: Pat Ritchie, 427-0413

Women every other Tuesday @ Noon

Mason County Fire District 5

Business Line: 426-5533

Burn Ban: 427-7799



Dates To Remember

MARCH

12th - Grange Oyster & Ham Dinner - 3:30 - 7 p.m.

26th - All Island Garage Sale @ HICC -

27th - Inquiring Minds: Alan Stein - 2 p.m.

MAY

7th - Garden Club Plant Sale - 9 - 2 p.m.

21st - Cemetery Clean Up - 9 - 1 p.m.

22nd - Harstine Choir Concert "Heart Beats" - 3 p.m.

28th - Farmers Market Season Opens -
10 a.m. to Noon

28th - HICC Spaghetti Dinner Benefit - 5 - 8 p.m.

JUNE

24th & 25th - Theater Club Play - 8 p.m.

26th - Theater Club Play - 3 p.m.

AUGUST

6th - Rummage Sale @ HICC - 9 - 3 p.m.

13th - Kids' Carnival - 11 - 2 p.m.

SEPTEMBER

23rd & 24th - Theater Club Play - 8 p.m.

25th - Theater Club Play - 3 p.m.

OCTOBER

8th - Final Farmers Market - 10 - Noon

8th - Apple Squeeze! - 10 a.m.

14th - Oktoberfest @ HICC - 6 p.m.

NOVEMBER

24th - Thanksgiving Dinner - 2 p.m.

26th - Holiday House - 10 a.m. to 3 p.m.

DECEMBER

2nd & 3rd - Theater Club Holiday Play - 8 p.m.

4th - Theater Club Holiday Play - 3 p.m.

9th - HICC Holiday Party - 6 p.m.

11th - Harstine Choir Concert - 3 p.m.

31st - New Year's Eve Dinner & Dance - 8 p.m.

Check for updates, changes and additions:
www.harstineecc.org

The Harstine Island Community Choir is a Mason county-wide choir where everyone is welcome to sing. Join them! The choir meets Sunday afternoons from 4-6 p.m. at the Harstine Island Community Hall. Car pools set up for Matlock/Steamboat, Allyn/Grapeview and Lake Cushman/Union areas.



May concerts are always the third weekend of May. This year Friday the 20th @ 7 p.m. - church in Shelton; Saturday May 21st will be at the St. Hugh Episcopal Church in Allyn @ 3 p.m.; and Sunday the 22nd at the Harstine Island Community Hall @ 3 p.m.



The 2011 May concert series, "Heart Beats," is a lively presentation of love songs. Delight in Disney's Kiss the Girl (The Little Mermaid), Some Enchanted Evening (South Pacific), and Summertime (Porgy and Bess). Mourn through songs of sorrow such as Danny Boy and Barb'ry Ellen. Songs range from master composers works like Brahms' melodious love songs to todays preeminent choral composers works like Z. Randall Stroope's powerful Omnia sol and Morten Lauridsen's haunting Dirait-on. The Choir debuts the commissioned love song of local composer and musician, Pat Butler.

December concerts are always the second weekend of December. This year Friday the 9th @ 7 p.m. - church in Shelton; Saturday December 10th will be at St. Hugh Episcopal Church in Allyn @ 3 p.m.; and Sunday the 11th at the Harstine Island Community Hall @ 3 p.m.



This year you will experience the unique flavor of Christmas in the southwest and across our southern border with music based on the rhythms and traditions of Hispanic America. The Christmas At The Neighbors concert features Conrad Susa's caroles and lullabies, with guitar and marimba - creating the image of a pinata party for the new baby. This and other Spanish holiday favorites are combined with songs from across the United States.

The choir also supports local events such as the Shelton Tree Lighting Ceremony. If you would like to perform or would like information about the choir visit [www/harstinechoir.org](http://www.harstinechoir.org) or call Director Elizabeth Berndt (432-9940). Remember... we're Mason Countys' choir. You don't have to live on Harstine Island to experience the joy of singing in a choir.



Locked Out??

24hr. Emergency Service

Automotive • Residential • Commercial
Licensed & Bonded

Mike Allegri

P.O. Box 2004 • Shelton, WA 98584 (360) 426-4446

Down to Dirt Stump Grinding, Inc.

Licensed & Insured

Russ Yates

(360) 259-5852

DTDSGI@gmail.com

BURGDORF CONSTRUCTION

**E820 Burgundy Road
Shelton, WA 98584**

Phone: 426-8613

Bonded and Licensed



**Fireside
Chimney
Sweeps**

RICK PLUMB

360.426.4986 • 360.275.2958

Serving Mason County since 1978

Produced by Harstine Island Community Club

Harstine Island Community Club
P.O. Box 1635
Shelton, Washington 98584

PRSTSTD
US POSTAGE
PAID
OLYMPIA, WA
PERMIT #78

Harstine Islander



Harstine Island Community Club Application 2011

April 1 to March 31, 2012 Membership Application/Renewal Dues \$15.00 per person (age 18 or over).

Name: _____

Street: _____

City, State, Zip: _____

Phone: _____ Email: _____

☐

Please check if you would like to receive our Newsletters by email in the future.

Email address: _____ (Please print neatly)

In addition to your HICC dues, please indicate if you would like to donate to any of the following:

Kitchen Upgrade \$ _____ Cemetery Fund \$ _____ Grange \$ _____

Women's Club \$ _____ Garden Club \$ _____ Theater Club \$ _____

Harstine Choir \$ _____ TOTAL ENCLOSED \$ _____



Note: Please do not send other club dues with this Community Club dues form. Instead, contact the Club(s) directly concerning its dues. Thank you! Please remove this form and mail it with your check to: *Harstine Island Community Club (HICC), P.O. Box 1635, Shelton, WA 98584.*