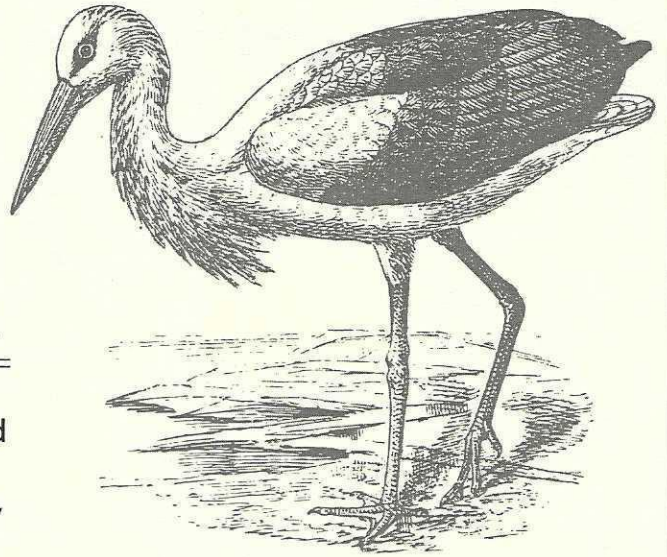


Harstine Islander



FROM THE PRESIDENT

ROSE BENZ

2015 proved to be another vintage year for Harstine Island Community Club. Our beloved Hall hosted a huge array of club meetings, social events, plays, indoor Saturday Markets, monthly HICC meetings, bi-monthly Senior Lunches, Inquiring Minds presentations, Holiday House, Cider Squeeze, Saturday Market, and more. For 100 plus years "The Hall" has been the hub and heart of our Harstine community.

Recently the HICC 2016 Ways and Means committee met to pen a proposed budget and project list for this year. The result: an impressive list of what must be done to maintain our aging historic Hall plus a conservative list to improve the halls usability. The catch 22 in this paragraph stems from the name "ways and means." Do we have the "means" money generated by dues and club fees to keep our Hall and do these projects and the "ways" people power to accomplish them.

No different from our own homes our community's house is maintained by people, power and funding. Our people power is derived from volunteers. Currently our pool of volunteers is experiencing somewhat of a low tide. To promote and recognize volunteers our Past President Jan Irving created and implemented the ITTI (I took the Initiative) awards. Jan crafted rosette style "ribbons" sporting the ITTI slogan. The premise is if you saw something that needed fixing or attention, fix it, or take charge of making sure the repair is made. Volunteering doesn't mean one must be available at all times to do it all or do the whole project by yourself. Volunteer to assist with a project. Choose to join in, encourage neighbors and friends to lend a hand. Many hands make a difference getting the jobs done.....Volunteer. If you are unable to volunteer financial support is always needed and welcome as well.





A MESSAGE FROM FORMER PRESIDENT JAN IRVING | PRESIDENT 2014/15

It is my final year on the HICC board and time to thank our supporters and encourage more. I love being involved in this community and find it fascinating to see how small groups of people work. Sure, sometimes things seem inconsequential but the pleasure is in watching a small community of mis-matched people find common ground and get things accomplished. It is a lot like living in Mayberry.

We have a wonderful board and it is always fun to meet, share our lives and have a few laughs. We do a little work, too. Be sure you check out the photos posted throughout the hall that chronicle our activities. They have been taken and donated by Tom Mulledy. If you have not been coming to the 2nd Friday Potlucks (sometimes there is Jello!), you have missed some entertaining and informative programs. Presentations on robotics, 3-D printing, and reading to children have been some of the programs from Pioneer School.

Since we are non-religious and non-political, everyone should be comfortable. Almost all of us have moved here from somewhere else and there are amazing stories to be discovered.

Come and join in!



2015 HONORED CITIZEN AWARDS

KAYCE BENSON • ROSE BENZ • SHELLEEN MATHEWS

HONORED CITIZEN | **KAYCE BENSON**

Each year as autumn arrives on Harstine Island we look forward to the many activities that center around this century-old community hall. HICC's Octoberfest is one of these special occasions in which we take time to celebrate and honor individuals who have given their time, energies and talents to our community and to the hall.

Since 1987 onward the Community Club has taken this opportunity to recognize selected individuals who have made significant contributions to the island and acknowledge them as Honored Citizens and Citizen of the Year.

The first 2015 Honored Citizen Award goes to a person who came to the island in 2007 with her husband. She was immediately interested in joining the clubs and meeting people. She has become a great supporter of all things Harstine! Whether it be for Women's Club or Community Club she has gladly stepped forward and given it her all.

Let me give you some clues... she has been Women's Club Co-Past President. She also uses her talents to create the yearly budgets for approval by the W.C. membership. She often works the W.C. booth at Farmers Markets (where when she saw the need for a hand truck to cart the items from the basement to the booth she donated it). During the Centennial Celebration she designed and marketed the Centennial T Shirts. She has given her energies to procuring the prizes for the Kid's Carnivals. She is the W.C Fund Raising Chair where she has created Island Bookmarks and most recently created the Labor Day weekend (Friday Night) Taco Bar. Which was greatly received and will be the newest tradition here on the island. Most importantly, for W.C. she was instrumental in vacillating the Judy & Charles Chase Scholarship Endowment. This major endowment coupled with W.C. budgeted funds goes for annual educational/vocational scholarships offered to island students.

If that wasn't enough, let's move onto some of her other accomplishments for the Community Club. She has taken on the task of organizing the yearly calendars. This is a big undertaking from collecting the photos, to the computer work designing the layout, to marketing them at Farmer's Markets and other functions. The Community Club counts this as one of the best fundraisers each year.

Last year, for the Centennial Celebration, Women's Club "History of Harstine Island Clubs & Organization" she organized readings by seven women of selected W.C. minutes from different decades into "An Abridge History". Each lady took on the part of a W.C. board member from the past. They were both informational and entertaining with their large 5, 10, and 50 cents cardboard cutouts which were waved gleefully at the appropriate times throughout the readings. Much to the delight of the audience!

Once again when there was a need, she stepped up to run this year's Spaghetti Feed. It was a great success and a traditional fundraising for the Community Club.

All of this and she's a snowbird! Other activities she's involved with are Bridge club, Pinochle Club, Bridge Club, Bridge Community Church and the Wild Field Advocacy Center Feeding Program.

As you can see, she is a great Supporter of all things Harstine!
Our Honored Citizen is Kayce Benson.

Thank you Kayce for all you do!

HONORED CITIZEN | ROSE BENZ

*There once was a girl from Shanghai
Who thought she'd like to buy
A place on the water
And Nobody fought her
So now she is happy as pie The place she landed was Harstine
An Island she had once seen
Was it not friendly enough?
Would it be tough?
It wasn't and now she is Queen*

We are pleased to present the Honored Citizen Award to Rose Benz. Rose the quintessential tomboy, was reluctant to join a thing called Women's Club. "Do I have to wear a skirt?" Who wants to sew and do crafts when they could be kayaking or riding horses? She reluctantly attended her first meeting and immediately met a woman who had known her mother. It was an instant welcome. Since she has jumped into island activity. She held a variety of positions in Women's Club including President. She entertains the women every year with her auctioneering. She helped write the Island Newsletter for many years, cajoled people to become community club members and showed up and helped with everything when there was a need. After two years as Vice President she is Now Community Club President.

We are proud to present the Honored Citizen 2015 Award to **Rose Benz**.

HONORED CITIZEN | SHELLEEN MATHEWS

This person arrived on the island in high gear and had not stopped running. If there is a task to be done, she takes it on. Here is your clue:

- S** – Is for her **Sunny** disposition
- H** – Is for her **Highly** tinted hair
- E** – Is for her **Energetic** condition
- L** – Is for her **Largess** of her care
- L** – Is for the **Laughter** with decisions
- E** – Is for and **Extraordinary** go-getter
- E** – Is for the **Endless** calendar revisions
- N** – Is for managing the **Newsletter**

Shelleen Mathews is an asset to the island. Taking on the Vice Presidency, she brought us a variety of programs including a visit by Tabbi the tiger. She has written and edited the Harstine Island Newsletter on her own for the last 4 years. Not an easy task to get all the differing personalities to send in contributions in a timely manner. She also took over the Community Hall calendar. Again, one of those tasks where multiple agendas often conflict. As hall manager she issued keys, scheduled rentals and again, counseled the conflicted. It is not easy to herd cats and snakes and canaries! But when you have taken on a tiger you can do anything.

Thank you **Shelleen**

Tonight it is my please to present the 2015 Citizen of the Year Award to an inspirational & dedicated person who has embraced the joys of living here on Harstine Island. This person has joined in many activities, quietly and generously lending hand wherever needed. Perhaps one of her best qualities is the ability to encourage others to join in and experience the pleasures of being a part of the magic of our island. She is a perfect

example of blending citizenship & volunteering together, all the while enjoying the friendships and camaraderie she encounters.

2015 CITIZEN OF
THE YEAR AWARD

JUDIE SCHAAF

Since building a home here on Sunset Hill in 2009 she has become involved with island activities. She joined the HICC Board first as member at large and then secretary for two years allowing her to understand the workings of the clubs and clubhouse. With that knowledge she joined the HICC Historical Preservation Committee working on the Centennial Celebration.

She helped solicit donations from area businesses & islanders for the improvements to the Hall and collected auction items for the "Art & Much More" Auction. She was in charge of the raffle ticket sales for the handmade quilt made by our own island quilters. She spent countless hours combing through HICC minutes, newsletters & archives to create interesting excerpts for "A Historical Look through the First 100 Years 1914-2014". These excerpts accompanied the "History of Harstine Island Clubs & Organizations" monthly programs detailing the history of the clubs. Her participation in these tasks helped to make the Centennial Celebration the great success it was.

You might recall seeing her at both the HICC membership booth and Women's Club booth lending her hand in sales & promotions at the weekly Farmer's Markets. She is on the Inquiring Minds where she is on the committee to bring speakers to the hall during the winter months. She volunteered with the Neighborhood Watch teams as the secretary and on the CERT team going to different neighborhoods to help with emergency preparation.

The Women's Club is lucky to have her serving her second term as President. All of the board members remain as well, a testament to her ability to serve with grace and Inclusiveness. In the past she chaired the Memorial Receptions providing a luncheon for island residents when asked by the bereaved families. Only giving up the important service when she accepted to take on the [presidency of the club. One of the causes close to her heart is working with the Pioneer School Food Bank team. She is a reliable worker whether it is in the planning and purchasing of the food or encouraging the Women's Club to give donations of money or food to; help the school children. This is one of the many important services of the club.

Now it is not all work and no play, she knows how to have fun too! She is active in the W.C. Sewing group and part of the Bookies an island book club group. She enjoys traveling, and sharing her home with family and friends.

This year we have an exception to our standard selection process in order to recognize an islander who experienced an extremely successful win this year. This event had been pursued in some fashion almost annually for over 20 years with no "wins". I don't believe this person had any intention of experiencing many more losses as it seemed from my outside view of the campaigns as they gained exposure and support that we had not experienced in the past. This event is going to benefit our community for many; future decades- I am speaking of the Pioneer Bond for approximately \$25M upgrade at the current site of the Primary and Middle School approved last February. Most likely the biggest event to happen in this community since the bridge.

2015 HICC
OCTOBERFEST AWARD

MARTY BREWER

We recognize Marty Brewer for his drive, dedication and performance in his position as our local school Superintendent to muster up the community support to push this levy over the top.

We present Superintendent Marty Brewer with this commemorative award as a token of our appreciation.

INQUIRING MINDS & CONVERSATIONS

Inquiring Minds/Conversations is a unique community service project of the Harstine Island Community Club. Now in its 8th year, it is a winter series of lectures and performances which normally take place on the last Sunday of the months of January, February and March at 2:00pm. The doors open at 1:30 with a coffee pot on, encouraging friends and neighbors, and off island visitors to come share with each other or to chat with the speaker.

Speakers and performers are provided by the Speaker Bureau of Humanities Washington, a state wide organization funded by the National Endowment for the Humanities, Washington State Legislature and private donations. The Speaker Bureau is only one of many programs, projects, and project funding available to communities throughout the State of Washington at little or no cost. (See Humanities.org)

In our case, Humanities picks up the speaker fee and HICC covers the travel expenses. Speakers are drawn from a roster of scholars, authors, teachers, musicians, historians, artists, and/or experts in a given field, all with remarkable credentials. It is a program available to any non-profit, which to our benefit, makes it possible for the Harstine Choir, Garden or Theatre Clubs to also book additional programs. We are open to partnering with any local non-profit who would like to join us in this opportunity to bring cultural programs to our island or the surrounding community. The committee always welcomes volunteers to help with the production details.

Contact: Arlen Morris, IQM Chair 360.432.9712 or arltim2@q.com

HARSTINE ISLAND GARDEN CLUB

The Harstine Island Garden Club is a very active long time community organization affiliated with the Harstine Island Community Club. Membership is open to all, off island or on. It has for many years sponsored the Saturday Farmers Market, a Spring Plant Sale, the Fall Apple Squeeze, and a variety of gardening and nature craft workshops, the proceeds of which go towards island landscaping projects, community hall improvement and landscaping projects, school based horticulture programs, and member field trips.



The group meets the second Thursday of the month, usually at the hall and usually at 1:00pm. However, meetings often take place at members gardens, or at field trip locations. Meetings are program based, featuring seasonal and educational garden topics, such as farming, canning, soil conditioning, transplanting, grafting, cheese making, or featuring a speaker expert in current horticultural and sustainable landscaping and gardening methods. Recently featured by State Park staff were the preservation projects of the historic apple orchards which still exist at Hope Island and Jarell's Cove State Parks.

Popular topics which are revisited regularly include landscaping with native plants, protective landscaping for shoreline and bluff lands, pruning, education on local invasive plants, and preservation of historic gardens. Several garden art workshops are presented yearly where new designs for birds houses, hypertuffa pots, planters, dividers, raised beds, and trellises might be explored.

An interest in gardens, gardening and the place these activities have in the wellbeing of a community are all that is required for membership, so bring your interests, your questions, and your contributions, come join this convivial group.

For Information Contact: Donna Strandberg, at 360.528.7150

HARSTINE ISLAND WOMEN'S CLUB

2016 marks the centennial for Harstine Island Women's Club. It began in 1916 when nine island women met for an afternoon of sewing and visiting. The ladies enjoyed themselves so much they decided to meet regularly. Currently there are 110 members who enjoy great camaraderie while doing things that are beneficial for the island and the greater community.

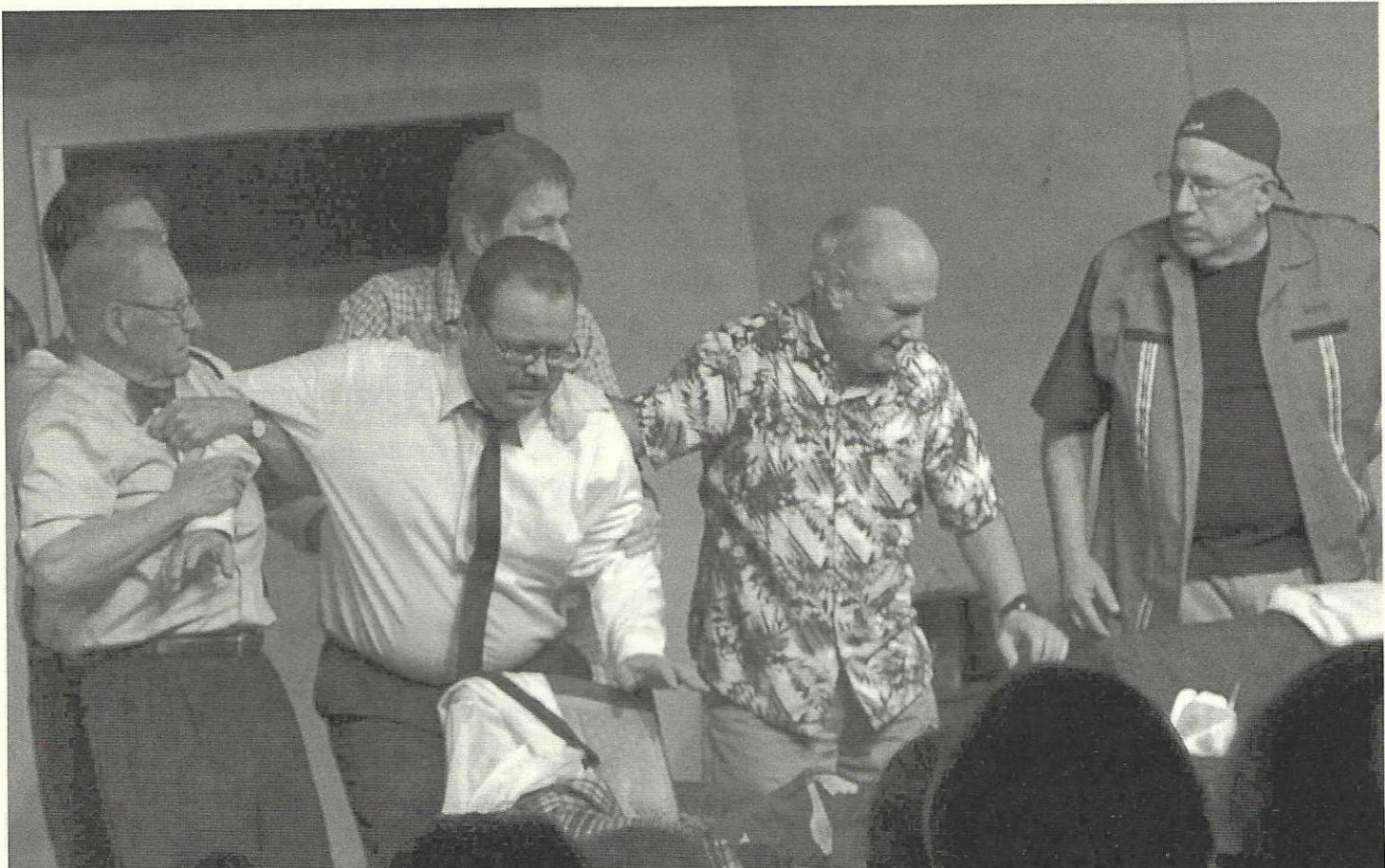
Women's Club and the Judy and Charles Chase Endowment Fund provide scholarships for a number of island residents who want to further their education. The Community Club is the recipient of funds that are used for maintenance and improvements to the hall. Monthly donations are made to the Methodist Food Bank, Saints Pantry, and Turning Pointe. Donations are collected monthly for the Pioneer Food Bank. A Kids' Carnival is held the second Saturday in August for a day of family fun. Memorial lunches are provided to family and friends of a deceased island resident if the family wishes to hold a memorial at the community hall.

One of our money-making events is selling island logo merchandise at the Saturday Markets. Sweatshirts, t-shirts, fleece jackets, mugs, cookbooks, and island maps are all very popular. Holiday House Bazaar is a show-place for local handcrafted items, and is held the Saturday following Thanksgiving. The newest event is the Taco Bar Dinner held the Friday of Labor Day Weekend. We also have a Craft Day with local instructors.

Meetings are held the first Thursday of the month with the exception of July when there is no meeting, and September when the meeting is the second Thursday. Social hour begins at 11:30, lunch at noon followed by an educational or entertaining program at 12:30, and ending with a short business meeting. Lunch is either a brown-bag with a provided dessert or one of our theme lunches or outings. All island women are invited to join this fun organization.

THEATRE CLUB

HICC PLAY APRIL 2015



THEATRE CLUB

Before the bridge was opened there were few permanent residents on the Island. Their local social life pretty much centered on the Grange and the Community Club. After the bridge and during the 1970's and 1980's people began to move here in increasing numbers. Retirees mostly, building their dream homes or expanding weekend cabins to a more comfortable living space. A few were commuters. One result was a growing community club membership and new blood with varying interests. Branching clubs formed as a reflection of these varied interests until we have the number of branch clubs we see today.

The Harstine Island Theater Club is one of those branches. A branch indeed but deeply rooted in Community Club and community in general. That was the vision of our founder: Community Theater!

Actors, directors even play- writes, all drawn from the community at large...each bringing differing histories and experience added a unique and charming flavor to the theater experience, along with the host of behind the scene support....from the very young to the aged and often entire families.

The aim and purpose of the club is to attempt to enrich our community through theater and the arts, drawing from the talents and efforts within the well-stream of community.

In the reminiscences of our founder, Shirl Larson; she recalls how a gentle request of Thora Seward to have "some theater on this island" prompted the beginnings. In 1972 the seventeen member Women's Club presented a Christmas show followed by a Spring show cobbled together with skits and poems written or adapted and overseen by Shirl, (who was a long time actress in Vaudeville, on stage and television before coming to Harstine), these continued and grew to annual events. In 1984 by laws were drawn up and HITC was established.

The club has grown and matured over the years since, producing shows from Vaudeville skits to full blown Broadway productions the likes of 'The Sound of Music'. Back stage clutter from stage sets and costumes became such a problem by 1987 that the club undertook the task of excavating under the West end of the building and constructing the storage space now existing...prop. room, heated costume room and the great room for Community Hall general use. (All of the lumber used was cut and milled on the Island by Glen Yates (with a lot of help).

Over the years the club has added lighting and sound systems, the control booth, enlarged the permanent stage and temporary stage. We share in Community Club annual expenses; insurance, taxes, etc. The club also provides an arts related scholarship.

If you would like to become part of the fun and work simply come to one of our monthly meetings and check it out. We meet the last Monday of every month at 7:00pm, Pot luck at 6:30pm.

ISLAND ENTRANCE



HICC TREASURERS REPORT FOR 2016

JIM IRVING | TREASURER

*Did you know that it takes over \$60 per day (not including building improvements)
just to keep the doors to the community hall open?*

BEGINNING BALANCES (1/1/15):

Savings: \$ 5,692
Checking: \$13,895
TOTAL: \$19,587

ENDING BALANCES 12/31/15):

\$ 5,694
\$ 6,083
\$11,777

2015 INCOME

Membership Dues	\$ 5,460	29%
Donations	3,800	20%
Fundraisers	2,410	13%
Hall Rental	4,399	23%
Insurance Contrib.	1,500	8%
Misc. Income	1,213	7%

TOTALS **\$18,782** **100%**

2015 EXPENSES

Administration	\$ 3,381	15%
Building Maint./Improvements	7,963	35%
Fundraiser Expenses	1,519	7%
Utilities	4,495	20%
Insurance	4,693	21%
Misc. Expenses	622	1%

\$22,674 **100%**

CENTRAL MASON FIRE & EMS

Central Mason Fire and EMS is a combination paid/volunteer department with 25 line Firefighters, including 12 Firefighter/Paramedics and 13 Firefighter/EMTs. The career Firefighters are supplemented by one Volunteer Battalion Chief and approx. 25 Volunteers Firefighters and EMT's. Administrative staff consists of Chief, Asst. Chief, Secretary, Clerical Asst. and 1 full time and 1 part time Mechanic.

Central Mason protects approx.. 157 sq. miles in central Mason County along with the City of Shelton with 10 stations thru out the District along with Shelton station of which 3 are staffed full time. They are the Shelton station, Lake Limerick Station and the Allyn station. Island stations are located at north end next to Community Hall and south end station is at Island Shores intersection. Both are volunteer and currently in need of volunteers. Harstine Island averages a 100 calls a year and while we always have career staff responding, having island volunteers greatly increases response time which is greater importance to all of us living farther out from services.

Anyone interested in becoming a member can contact the District at 426.5533 or email @ info@mason5.org.

Central Mason also offers the following:

- CPR classes – to register call 426.5533
- Driveway markers – reflective driveway markers
- Prevention and Preparedness classes



HARSTINE ISLAND CERT

Harstine Island CERT (Community Emergency Response Team) is community volunteers trained in disaster preparedness and how to respond to emergency situations in their community. When emergencies or disasters happen, CERT members can provide critical support to first responders and provide immediate assistance to victims at a disaster site.

CERT is a 20 hour class that helps prepare you to help yourself, family, neighbors, and your community. Training topics include Basic Medical First Aid, to include triage and treatment and CPR and defibulator use. Search and Rescue, Fire Suppression (fire extinguisher use), documenting and reporting, and Sheltering and Preparedness training also covered.

Harstine CERT main mission is to inform and promote emergency preparedness to our Island Community, our main action plan is in 3 parts.

Individual Home Plans – Homeowner ensuring that they are prepared in their home with such things as 7-14 day emergency supplies, having out of state contact, having a To-Go Kit in case you need to leave on moments notice, important documents safeguarded, and taken first aid and CPR classes.

Neighborhood Plan – A plan to work together with a group of immediate neighbors to look in and look after each other in the group in event of major emergency. Group can meet once a year and should include CERT preparedness presentation. Topics should include those residents with special medical needs or restrictions, residents with special professional training that could come in handy, and special equipment someone has that may be helpful. Again suggest for all to take First Aid classes.

Community Plan – Plan would include designating a central reporting area and establishing necessary shelters and medical aid area. Current plan calls for all volunteers (CERT or not) would report to the north end Fire Hall next to Harstine Community Club. Fire Hall will also be utilized as medical aid station and communication center and HCC opened as shelter. Bridge Community Church also viable shelter as well as Harstene Pointe Clubhouse.

Harstine CERT is a very small group at present and could use more volunteers. Classes are offered periodically thru-out the County and Island group meets the 3rd Thursday of each month at 6:30 at North Fire Hall unless otherwise posted. We are looking for neighborhood groups who like an emergency preparedness presentation put on (1-1/2-2 hrs) in a neighborhood home.

Anyone interested in CERT or Neighborhood presentation can contact: Nick Neuerburg @ 360.427.5521

All of us working together and taking steps to better prepare for and deal with a real disaster, can and will make a difference when the real event happens.

THE PIONEER FOOD BANK

As more and more people now know, the Harstine Community has an active, dynamic food bank that operates out of the Pioneer Middle School on the last Tuesday of each month. The food bank is operated by a group of dedicated volunteers that collect non-perishables and buy fresh food each month; then distribute all the food at one giant distribution event where everyone is welcome.

Originally operated by Mason Matters, the Bridge Community Church volunteered to be the fiscal, non-profit entity responsible for the food bank in February, 2014. In the two years that the church has been involved, usage of the food bank has increased dramatically from serving 15 families representing 67 people in 2014 to last month's total of 39 families representing 144 people served!

The Pioneer Food Bank could not exist without the wonderful support of our business partners and our working volunteers. Fresh Start, 'S and S' Produce, Fred Meyer, Pioneer Kiwanis, the Harstene Women's Club and the Pickering Storage Facility are some of our amazing supporters. These partners collect food and money for the food bank each month. Our buyers use the dollars to purchase additional food plus fresh fruit and vegetables. Also, other canned and frozen foods are collected from the Washington State Emergency Food Assistance Program and then delivered to our storage unit as a part of the Federal Government Commodities Program. Other volunteers inspect, inventory and organize the food and plan the distribution for the following month (for example: put the pasta noodles with the pasta sauce).

Low income families qualify for both the commodities and donated foods. Families that do not qualify for low-income status are still welcome to take items that have been donated by our partners and volunteers. Our volunteers are so very proud to represent the entire community. We live in a wonderful neighborhood where people genuinely care for each other!

If you want more information about times, donations or volunteering, please contact :

Dale McDaniel

567 E. Pointes Drive West, Shelton, WA 98584

360.463.7991 | mcdaniel2@q.com



PIONEER FOOD BANK

We could not meet the need with out Community Partnerships and Individual Donations.
Thank you all for your continued support!

Pioneer Food Bank is an all volunteer and community partnership food bank dedicated to serving the Pioneer Area.

We provide:

A monthly food disbursement @ the Pioneer Intermediate Middle School Cafeteria. The monthly date is on the Pioneer School District web site.

Contributions helping to provide weekend back pack meals for our Pioneer School children at risk.

Pioneer Food Bank Donations

may be made **by mail**: Please make checks **payable to: Pioneer Food Bank** **Memo line** indicate food bank or back pack program if you have a preference. **Checks may be mailed to:** Pioneer Food Bank 500 N Island Drive Shelton WA or sent to the Pioneer School District office.

Non perishable food items may be dropped off:

At Fresh Start Deli on Pickering Road
or for further coordination efforts please email
Pioneerfoodbank@gmail.com

PARTNERSHIP AGAINST HUNGER

Thank you for joining our Community Partnership Against Hunger!

For most, Thanksgiving comes only once a year. For Pioneer Food Bank Patrons, the spirit of Thanksgiving comes monthly, and the Patrons are so grateful. Serving the Pioneer School District boundaries, it is a task that could not be achieved without the partnership efforts of many. Volunteer coordinators wish to thank Bridge Community Church for stepping forward as our community partner anchor. They are joined by Fresh Start Deli, Pioneer Schools, Heath and Heathers Nursery, Agate Store, area home owners associations, Pickering Storage, S&S Produce, VFW Auxiliary 1694, the former Harstine Grange, a small army of faithful - monthly volunteers, along with the generous individuals, providing ongoing and needed donations.

We are blessed to be working with all of you!

Little known Pioneer Food Bank facts...

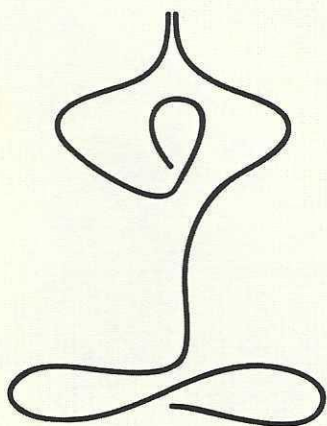
Did you know most of the volunteer roster is made up of Harstine Island residents?

Did you know that each summer Pioneer Food Bank sponsors a program that distributes food to the children in need in our community, in the absence of the school years lunch program and back pack program?

Did you know your summer garden surplus is a welcomed donation?

Did you know Pioneer Food Bank was started by AmeriCorps volunteer Tara Rigby (a former Harstine Island resident)?

Did you know dispersal dates for the Pioneer Food Bank can be found on the School District web site WWW.PSD402.ORG?



ISLAND YOGA

**Harstine Women's Club
Invites Islanders**

Suggested Donation : \$10

Tuesdays 10 - 11am

Thursdays 8:30 - 9:30am

Located at Harstine Community Hall

AMAZON DONATIONS

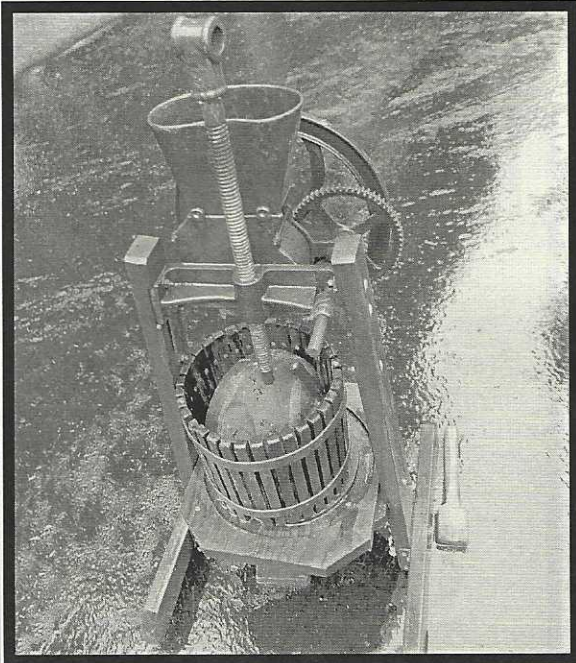
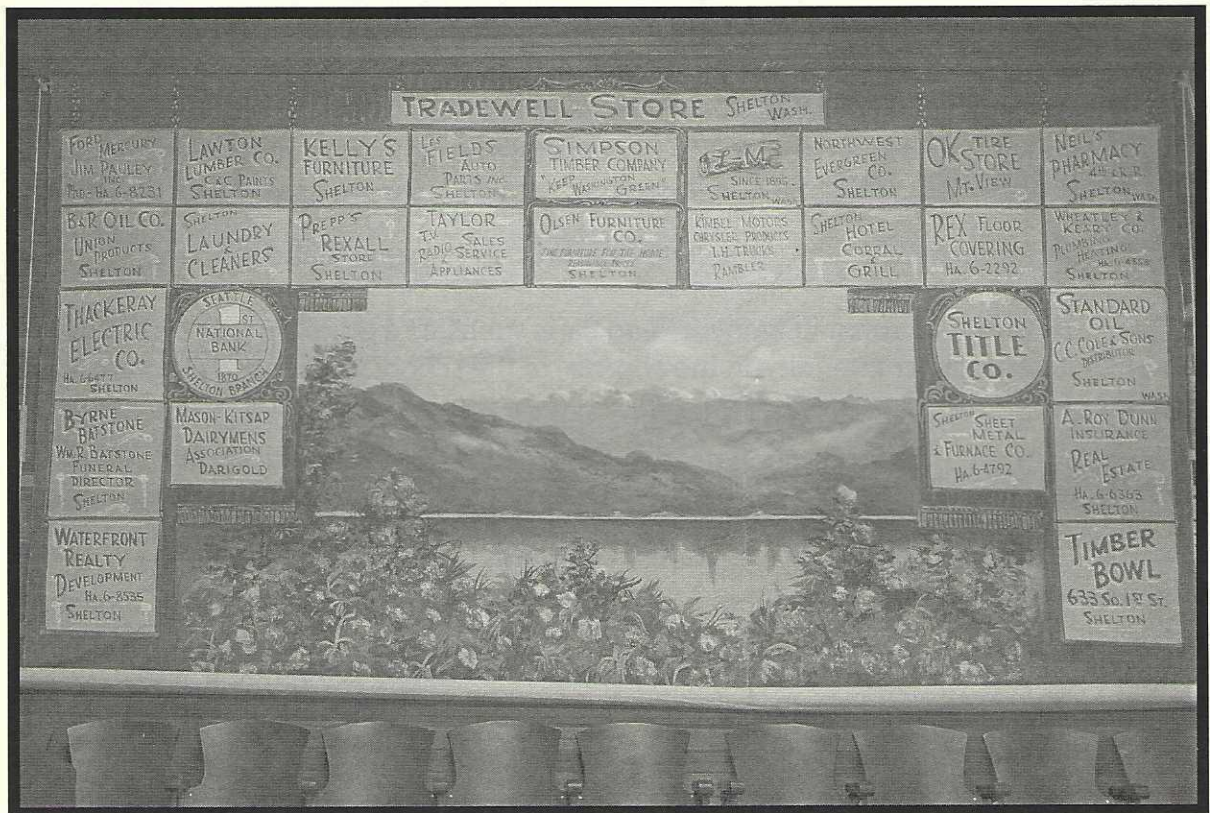
Help HICC to raise money as you spend money.

Bookmark the link <http://smile.amazon.com/ch/80-0496918> and support us.

If you put this in your toolbar and go through it every time, 0.05% of eligible purchases are donated to HICC.

It is easy and costs nothing. Every little bit helps!

WALL CANVAS



HICC HISTORY

Before the bridge was opened there were few permanent residents on the Island. Their local social life pretty much centered on the Grange and the Community Club. After the bridge and during the 1970's and 1980's people began to move here in increasing numbers. Retirees mostly, building their dream homes or expanding weekend cabins to a more comfortable living space. A few were commuters. One result was a growing community club membership and new blood with varying interests. Branching clubs formed as a reflection of these varied interests until we have the number of branch clubs we see today.

The Harstine Island Theater Club is one of those branches. A branch indeed but deeply rooted in Community Club and community in general. That was the vision of our founder: Community Theater!

Actors, directors even play- writes, all drawn from the community at large...each bringing differing histories and experience added a unique and charming flavor to the theater experience, along with the host of behind the scene support....from the very young to the aged and often entire families.

The aim and purpose of the club is to attempt to enrich our community through theater and the arts, drawing from the talents and efforts within the well-stream of community.

In the reminiscences' of our founder, Shirl Larson; she recalls how a gentle request of Thora Seward to have "some theater on this island" prompted the beginnings. In 1972 the seventeen member Women's Club presented a Christmas show followed by a Spring show cobbled together with skits and poems written or adapted and overseen by Shirl, (who was a long time actress in Vaudeville, on stage and television before coming to Harstine), these continued and grew to annual events. In 1984 by laws were drawn up and HITC was established.

The club has grown and matured over the years since, producing shows from Vaudeville skits to full blown Broadway productions the likes of 'The Sound of Music'. Back stage clutter from stage sets and costumes became such a problem by 1987 that the club undertook the task of excavating under the West end of the building and constructing the storage space now existing...prop. Room, heated costume room and the great room for Community Hall general use. (All of the lumber used was cut and milled on the Island by Glen Yates (with a lot of help).

Over the years the club has added lighting and sound systems, the control booth, enlarged the permanent stage and temporary stage. We share in Community Club annual expenses; insurance, taxes, etc. The club also provides an arts related scholarship.

If you would like to become part of the fun and work, simply come to one of our monthly meetings and check it out.

We meet the last Monday of every month at 7:00pm, Pot luck at 6:30pm.

HARSTINE MAP





Will there be Room in the Harstine Island Hall for You? Or . . . for Your Grandchildren?

Once upon a time, more than 100 years ago, the Harstine Island Community Hall was built as a place for Island men to play basketball. Since then, the Hall has been used for many functions ranging from wedding receptions to musical productions and plays, to Christmas dinners, Senior Lunch, rummage sales, card playing and more. The list goes on and on. Attendance at these various functions, of course, changes from event to event, but on many occasions the Hall has been filled to overflowing. The Club anticipates that the Island population will continue to grow and evolve, and that, in time, additional meeting and recreational space will be needed.

Sometime in the second hundred years, the Hall capacity may need to be expanded to best serve our community. The Second Hundred Year Fund Raising Committee was formed to get a head start on raising money to provide for this eventuality. Decisions on how to use this fund will not be made for some time yet and require a two-thirds affirmative vote of both the Club Board and the membership at large in order for the fund to be used.

Action to create the fund was taken at a meeting of the Club's executive board in June, 2014. This followed work by a group of concerned Island residents led by Jeff Geibel and Dudley Panchot. This group now functions officially as the fund-raising committee. All of its members have contributed to the fund and, with other donors, the fund now totals \$19,975. The fund-raising effort got underway officially at Octoberfest 2014 at the Hall. The fund-raising encompasses giving in several forms-cash, stocks, property, and legacy gifts. Morgan Stanley, which will manage the funds thru the HICC Treasurer, has agreed to do so without charging a commission for this service.

Whatever is built and whenever it happens, will take a lot of money. Therefore, we believe this dedicated building fund is important and request that you make a contribution now. Any amount (which is eligible to be tax deductible) is welcome at anytime. We especially are grateful for gifts given to the HICC Second 100 Year Building Fund in your Will and or Trust. You may use the forms on the next page. Please give serious consideration to making a special bequest in line with all the benefits you enjoy from club activities - an amount that will keep the club vital, growing and at the center of our Harstine community. We want there to always be room at the Hall for you, your children and grandchildren and generations to come.

HICC 2ND 100 YEAR BUILDING FUND DONORS

Jeff and Sally Geibel, Dudley and Anne Panchot, John and Donna Hamilton, Leo and Marlene Echantz, Wally and Jo Ewart, Jim and Jan Irving, Mike and Linda Benson, Chris and Becky Rowley, Roy and Connie Ferguson, David Mackey and Sandra Herndon, Peggy Smith and Bart Simon, Willa Smith, Ken and Sandra Kramer, Bernie and Jan Walton, Ted and Ann Watts, Joye and George Robinson, Jeffrey and Deborah Itlshul, Walt and Kris Hitchcock, Bill and Mary Watt, Scott Fournier and Jansine Sagan, Ken and Pat Remine, Greenlake Sports Therapy.



2nd 100-Year Building Fund

Make your donation now

You may make your tax-deductible donation in most any form: cash now, leave a donation in your will to become a Legacy Donor and enjoy special benefits in the future, give or leave real estate or securities.

CASH NOW: Make your check out now to "HICC" and mail it to: Treasurer, HICC, PO Box 1635, Shelton, WA 98584. On the check in the "For" line, write: "2nd 100-Year Building Fund Donation."

NAME THE FUND IN YOUR WILL: Use the two note forms below. One to notify your attorney of this donation and the amount; the other to tell the HICC Treasurer so we can thank you and name you as a Legacy Donor in the future (only your name, not the amount given, will be used unless you don't want even that, then check the box in the form below.)

REAL ESTATE, SECURITIES OR OTHER DONATIONS: To make special arrangements for these or other gifts, call Jeff Geibel, Convener, 2nd 100-Year Building Fund Committee, (360) 426-4922.

Fill out this note and mail it in a stamped envelope to your attorney or estate executor:

HICC 2ND 100-YEAR BUILDING FUND LEGACY DONATION

I _____ leave \$ _____
Print Name

Or I leave _____ % percent of the remainder of my estate to the "HICC 2nd 100-Year Building Fund", a separate account of the Harstine Island Community Club (HICC) to be managed and used only in accordance with the resolution of the HICC Board establishing said Fund, adopted July 3, 2014.

Signed _____ Date _____

----- Cut these notes on borderlines, fill in your information, and mail both in stamped envelopes. -----022916

Fill out this note and mail it in a stamped envelope to HICC:

TREASURER, HARSTINE ISLAND COMMUNITY CLUB, PO BOX 1635, SHELTON, WA 98584

Treasurer: This is to advise you I have made a Legacy Donation in my will to the HICC 2nd 100-Year Building Fund in the amount of \$ _____.
You may include my name in future fund promotion, but do not disclose the amount I plan to give. Check here _____ if we may not even use your name.

Print name _____ Date _____

Address _____ Phone _____



HARSTINE ISLAND
COMMUNITY CLUB
P.O. BOX 1635
SHELTON, WA 98584

DATES TO REMEMBER

APRIL

- 7 Women's Club
- 9 Saturday Indoor Market
- 13 Senior Lunch
- 14 Garden Club
- 25 Theater Club
- 27 Senior Lunch

MAY

- 5 Women's Club
- 11 Senior Lunch
- 12 Garden Club
- 14 Saturday Indoor Market
- 21 Hall & Cemetery Cleanup
- 22 Harstine Island Choir
- 23 Theater Club
- 25 Senior Lunch
- 28 Outdoor Saturday Market Begins
Spaghetti Dinner

JUNE

- 2 Women's Club
- 8 Senior Lunch
- 9 Garden Club
- 22 Senior Lunch

JULY

- 1 Summer Play
- 2 Saturday Market
- 2 Summer Play
- 6 Senior Lunch
- 14 Garden Club
- 20 Senior Lunch

AUGUST

- 3 Senior Lunch
- 4 Women's Club
- 6 Rummage Sale
- 11 Garden Club
- 13 Kids Carnival
- 17 Senior Lunch
- 22 Theater Club

SEPTEMBER

- 1 Women's Club
- 8 Garden Club
- 14 Senior Lunch
- 26 Theater Club

OCTOBER

- 8 Women's Club & Apple Squeeze
- 8 Last Saturday Outdoor Market
- 12 Senior Lunch
- 13 Garden Club
- 14 Octoberfest
- 24 Theater Club
- 26 Senior Lunch

NOVEMBER

- 3 Women's Club
- 9 Senior Lunch
- 10 Garden Club
- 12 Saturday Indoor Market
- 24 Thanksgiving Day Dinner HICC
- 26 Holiday House
- 28 Theater Club

DECEMBER

- 1 Women's Club
- 2 - 4 Holiday Play
- 7 Senior Lunch
- 8 Garden Club
- 10 Saturday Indoor Market
- 21 Senior Lunch
- 25 Christmas Day Dinner HICC
- 26 Theater Club